

Advertising Revenue.

The Nairobi City Players

present

IRMA

LA DOUCE

at

THE

NATIONAL

THEATRE



JULY/AUG. 1963

200/- less 16 1/2%
de Haaf.

Don't be vague -

ASK FOR

Haig

SCOTCH WHISKY

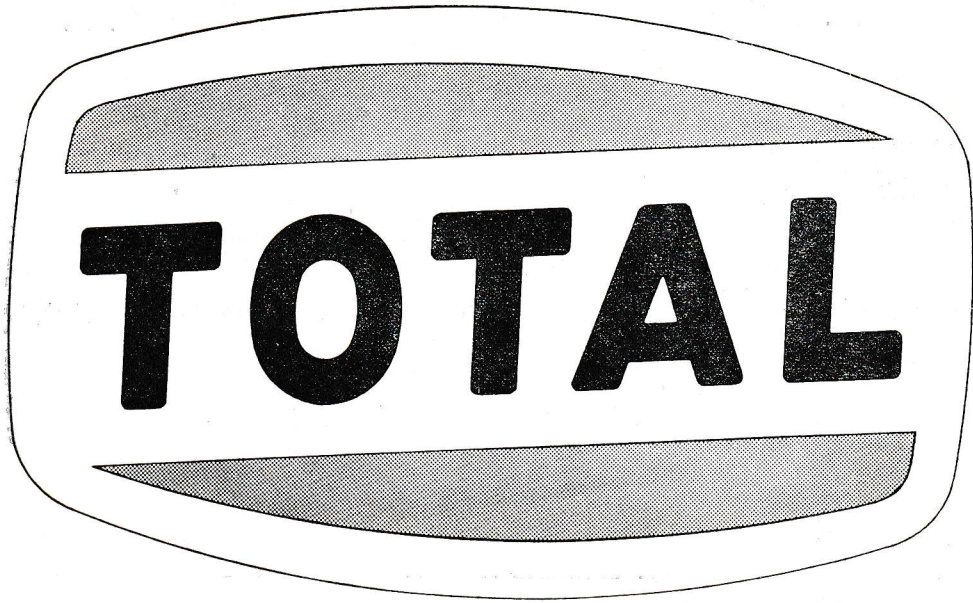


Sole Distributors for KENYA — UGANDA — TANGANYIKA

BELIRAM PARIMAL & CO. LTD.

NAIROBI — MOMBASA — KAMPALA

200/- less 16 1/2%
de Huaf



AT
YOUR
SERVICE

TOTAL OIL PRODUCTS (EAST AFRICA) LIMITED

100/-
direct.

The French are renowned for Fashion...

SO ARE WE AT **JAX**

HARDINGE STREET

Phone 23426—Ext. 9

(OPEN 8 — 5 p.m.)

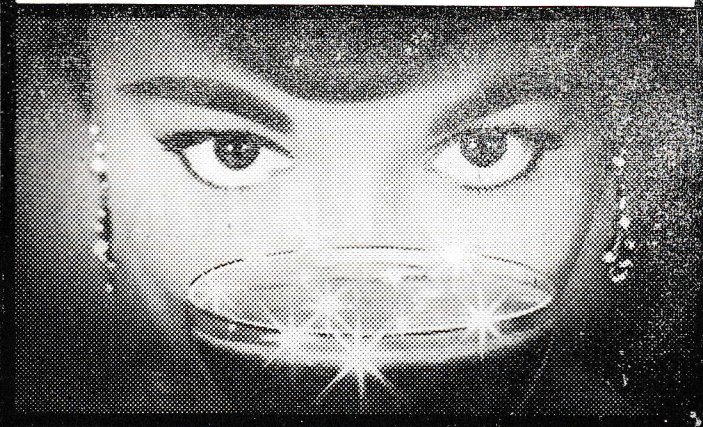


de Haf
100/-
162/6

Obtainable
at
Mombasa
Medical
Stores
Ltd.

Government Road
Nairobi

...to give your eyes that
"Champagne Sparkle"



eye make-up by
MAX FACTOR HOLLYWOOD

Three important requisites that will frame
your eyes in glowing beauty.

Max Factor EYE SHADOW

Intensifies the color of your
eyes and makes them appear
larger, more lustrous, sparkling.

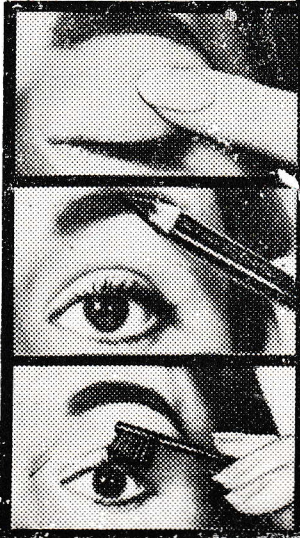
Max Factor EYEBROW PENCIL

To shape and add lustre
to your eyebrows.

Max Factor EYELASH MAKE-UP

Makes your lashes look longer,
lovelier. Won't run or smart.

At your favorite store



SOLE DISTRIBUTORS

WARDLES (WHOLESALE) LTD.

de Haaf

200/-

les 16¹⁰ 2/10

SALUT!

200/-
desert



MR. BRANDYMAN

IS

“Tres, Tres, Snob”

and recommends only

the best COGNAC

MARTELL – *Naturellement!*

SOLE AGENTS

JARDIN LIMITED

**KENYA NATIONAL THEATRE
THE NAIROBI CITY PLAYERS**

PRESENT

Anne James

in

**IRMA
LA DOUCE**

Music by MARGUERITE MONNOT

Original book and lyrics by ALEXANDRE BREFFORT

Adapted by JULIAN MORE, DAVID HENEKER & MONTY NORMAN

with

SBISH TRZEBINSKI and PETER PEARCE

Musical Director: ERIC ROYSTON-PRINCE

Choreography: JENNIFER ANDERSON

Costumes by MARY EPSOM

Directed by

ROBERT YOUNG

Assisted by

BRYAN EPSOM

About the Show

In 1956, at the Theatre Gramont in Paris, one of those miracles of show business happened. A slightly off beat and highly original musical called "IRMA LA DOUCE" took Paris by storm. Marguerite Monnot, the composer who wrote many of Edith Piaf's songs, found an ideal collaborator in Alexandre Breffort, from whose novel about the underworld in Montmartre the story was taken. In 1958, two years later, at the Lyric Theatre in London came the first performance in English, and the charm and wit of this enchanting and very French story was preserved in the translation by Julian More, David Heneker and Monty Norman.

In London the production was by Peter Brook. Elizabeth Seal played "Irma" the naive street girl; Keith Michell played "Nestor", the law student in love with "Irma" and Clive Revill was "Bob", the cynical proprietor of a bar in the backstreets of Pigalle. It is interesting to note that both Keith Michell and Clive Revill are well known Shakespearean actors but made the transition from the Avon to the Seine quite successfully.

As in France, where records of the show won the "Grand Prix du Disque" on two occasions, "Irma La Douce" has been heavily recorded by all the major record companies in Europe. At one time, in 1959, "Irma La Douce" was playing simultaneously in London, Paris, Milan and Madrid. It was subsequently produced in New York and South Africa.

SYNOPSIS OF SCENES

ACT I

SCENE ONE — Outside the Bar-des-Inquiets, Pigalle.

SCENE TWO — Inside the Bar.

SCENE THREE — Irma's Room.

SCENE FOUR — The Pont Caulaincourt.

SCENE FIVE — Irma's Room.

SCENE SIX — The Pont Caulaincourt.

SCENE SEVEN — The Hotel Room.

SCENE EIGHT — The Bar.

SCENE NINE — The Hotel Room.

SCENE TEN — Irma's Room and Hotel Room.

SCENE ELEVEN — The Hotel Room.

SCENE TWELVE — The Street.

SCENE THIRTEEN — The Banks of the Seine.

SCENE FOURTEEN — The Bar.

ACT II

SCENE FIFTEEN — A Law Court.

SCENE SIXTEEN — Prison Ship.

SCENE SEVENTEEN — Paris. The Street outside Irma's Flat.

SCENE EIGHTEEN — The Prison, Devil's Island.

SCENE NINETEEN — The Raft.

SCENE TWENTY — A Paris Street.

SCENE TWENTY-ONE — The Police Station.

SCENE TWENTY-TWO — The Street.

SCENE TWENTY-THREE — Irma's Room.

IRMA LA

Music by MARGUERITE MO

Original book and lyrics by ALEXANDER BREFFORT

CHARACTERS

Irma-La-Douce (a Poule)
Nestor-Le-Fripe (a Law Student)
Bob-Le-Hotu (Proprietor of the
Bar-des-Inquiets)
Polyte-Le-Mou (a Mec)
Jojo-Les Yeux-Sales (a Mec)
Roberto-Les-Diams (a Mec)
Frangipane (a Mec)
Persil-Le-Noir (a Mec)
Police Inspector
A passer-by
Man with Juke box

ANNE JAMES
SBISH TRZEBINSKI
PETER PEARCE
BRYAN EPSOM
CLIVE MULLEY
JOHN LANDON
IAN LAWRENCE
ROBERT BUTLER
PETER WALKER
JEREMY HURLES
JATINDER PAUL

M.
Fals
Cou
Cou
An
An
1st
2nd
3rd
A T
A P

Dancers:— IAN LAWRENCE, JEREMY HURLES, A

Police, Irma's Admirers, Prisoners, etc.:— Jeremy Hurles, Alan Collins, Jeremy Co
Bowley, Trevor Cooper-Tydeman, Eric Kr

Director: ROBERT YOU

Owing to the illness of Mr. Robert Beau
was taken over by Mr. Robe

Assistant Director: BRYAN E

Musical Director: ERIC ROYSTON PRINCE

Madame de Haaff
Limited.
New Stanley House Arcade

LA DOUCE

by MARGUERITE MONNOT

Adapted by: JULIAN MORE, DAVID HENEKER & MONTY NORMAN

CHARACTERS

*M. Bougne (a Ballroom Owner)
False Mecs*

Counsel for Prosecution

Counsel for Defence

An Honest Man

An Usher

1st Warder

2nd Warder

3rd Warder

A Tax Inspector

A Priest

DAVID COLLINS

JEREMY HURLES

DAVID COLLINS

JEREMY CORNISH

TREVOR COOPER-TYDEMAN

JATINDER PAUL

ABDUL GHAFUR

JEREMY WOODS

TREVOR COOPER-TYDEMAN

ALAN COLLINS

JEREMY HURLES

TREVOR BOWLEY

JEREMY HURLES, ALAN COLLINS, DAVID COLLINS.

an Collins, Jeremy Cornish, Jatinder Paul, David Collins, Jeremy Woods, Trevor
oper-Tydemman, Eric Knott, Abdul Ghafur.

ctor: **ROBERT YOUNG**

of Mr. Robert Beaumont the production
over by Mr. Robert Young.

nt Director: **BRYAN EPSOM**

Choreographer: **JENNIFER ANDERSON**

Individual garments at reasonable prices

Large selection of hats

Costume jewellery a speciality

*200/-
less 16 1/2
de Hump*

MUSICAL NUMBERS

ACT I

<i>"Valse Milieu"</i>	BOB
<i>"Tres Tres Snob"</i>	THE MECS
<i>"The Bridge of Caulaincourt"</i>	IRMA & NESTOR
<i>"Our Language of Love"</i>	IRMA & NESTOR
<i>"She's Got the Lot"</i>	IRMA'S ADMIRERS
<i>"Dis-Donc, Dis-Donc"</i>	IRMA, NESTOR AND DANCERS
<i>"Le Grisbi is Le Root of Le Evil in Man"</i>	BOB & THE MECS
<i>"The Wreck of a Mec"</i>	NESTOR
<i>"That's a Crime"</i>	THE MECS

ACT II

<i>"The Bridge of Caulaincourt"</i> (Reprise)	IRMA & NESTOR
<i>"From a Prison Cell"</i>	NESTOR & THE MECS
<i>"Irma La Douce"</i>	IRMA
<i>"There is Only One Paris for That"</i>	THE MECS
<i>"The Freedom of the Seas"</i>	NESTOR & MECS
<i>"Fever Dance"</i>	IRMA
<i>"Our Language of Love"</i> (Reprise)	IRMA
<i>"But"</i>	POLICE INSPECTOR, TAX INSPECTOR, POLYTE, M. BOUGNE, NESTOR
<i>"Christmas Child"</i>	THE COMPANY

ORCHESTRA

Piano

JOHN DAWSON

Accordion

HENK VANDERWAL

Bass

JAN FILMER

Flute

PADDY WALSH

Clarinet/Saxophones

GEOFFREY EVE

ROGER PRICE

Trombone

JOHN COX

Percussion

RONNIE WALLBANK

Musicians from the Staffordshire Regiment are playing by kind permission of the Commanding Officer, Lt. Col. K. M. Stuckey, M.B.E.

Musical Director: ERIC ROYSTON PRINCE

FOR THE NAIROBI CITY PLAYERS

Stage Director	Jack Longford.
Stage Manager	Mac Spence.
assisted by	Denis Patience, Clifton Wilde, Tony Holden, Colin Patience, Wendy Owens, and pupils of the Prince of Wales School.
Prompt	Jean Cottreli.
Settings by	Geoffrey Best, Denis Patience, Clifton Wilde, Tony Holden, Colin Patience, Francis Waruhari, Nelson Gachanja.
Additional designs by	Robert Marshall.
Wardrobe by	Mary Epsom.
Properties	Christine Ainsworth, Elizabeth Davie, Jackie Williams, Elaine Parsons.
Sound Effects	Sue Cornish.
Lighting Adviser	Jack Longford.
Lighting spots operated by	Anne Keighley-Bell and Roger Phipps.
Business Manager	Bryan Epsom.
Public Relations, Publicity and Programme	Bryan Epsom, Peter Pearce and Leonard Pierrepoint.
Poster and programme design by	Errol Trzebinski.
Production Secretary	Dorothy Mulley.

FOR THE NATIONAL THEATRE

Maneger	G. T. Stoneham.
Theatre Assistant	Ewart Norris, D.F.M.
Lighting	George Watson.
Box Office	James Oleche.

ACKNOWLEDGEMENTS

The Nairobi City Players wish to express their appreciation and thanks to:—

Jardin Limited for invaluable assistance in providing bar accessories.

Max Factor (Wardles Ltd.) for makeup for entire cast.

Alibhai & Co. Ltd. for loan of Mr. Landon's suit.

"The Duka" Sadler Street for loan of cooker.

Lafayette for loan of Miss James' bed jacket.

The Misses Julia and Suzanne Mackay for loan of twin dolls.

The Nairobi Emporium for loan of smock.

African Boot Company for loan of handbag.

British Overseas Airways Corporation for flying out musical scores.

August Moon Cafe for loan of tables.

Mr. David of Helena Rubenstein Hair Salon.

Andrew Crawford Productions for recording sound effects.

Gilfillan & Co. Ltd. for loan of SONY tape recorder on which all sound effects for "IRMA" are reproduced.

The Band President and Band Master 1st Bn. The Staffordshire Regiment for loan of musical instruments.

Motor Mart limit 200/-



THERE'S NOTHING LIKE A
N'EST CE PAS?



FOR GETTING AROUND,

THE MOTOR SERVICE COMPANY a member of
P.O. Box 5912, Telephone 20461, Nairobi.



Formidable!
with Gin

Superbe!
in a cocktail

Rafraichissant!
topped with soda

Appetissant! neat



Say
'Noilly Prat'
and your French will be perfect



There are so many delightful ways of drinking Noilly Prat . . . and every single one of them is right. The clean, zestful flavour of this classic dry vermouth is as exhilarating as France itself — a subtle blend of fine French wines matured for at least five years. With Noilly Prat in your glass, you can say "good health" and really mean it.
Ask for Noilly Prat at the bar, at your wine merchants.

NOILLY PRAT

FRENCH VERMOUTH

SOLE IMPORTERS

JARDIN LIMITED

noilly prat

superbe

rafraichissant

appetissant

*direct
just
real*

Kenya Authority

~~200/25~~

245/25

Contract against a/c
from BOAC for
freight & services.

FLY
B·O·A·C
 TO ALL
6
 CONTINENTS
 ALL OVER THE WORLD
B·O·A·C
 TAKES GOOD CARE OF YOU

For full details consult your local B.O.A.C. Appointed Travel Agent or B.O.A.C., Nairobi, Kampala, Dar es Salaam, or East African Airways (General Agents for B.O.A.C.) Nairobi, Kampala, Mombasa, Dar es Salaam, Tabora, Mbeya and Zanzibar.

BRITISH OVERSEAS AIRWAYS CORPORATION
 IN ASSOCIATION WITH EAA-CAA-BUA AND ASSOCIATE AIRLINES

16

*de Haaf
roof less
10
16 2/10*



The New
BOSCH
LCK 220
Refrigerator
with Deep-freezer
Suitable for
all temperatures

The most popular Refrigerator
in Africa

We stock a full range of
BOSCH REFRIGERATORS
—11 different models from
4.8 to 8.5 cu. ft.

**BOSCH SERVICE
THROUGHOUT THE
WORLD**

Trade-ins can be arranged

Available from all
BOSCH DEALERS

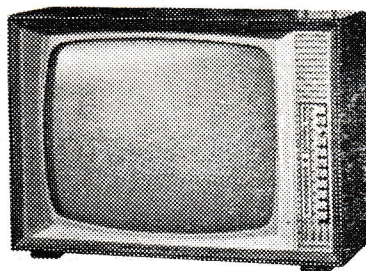
BLAUPUNKT

PRECISION

TELEVISION

Crystal-clear pictures—no
eyestrain. Patricularly good
reception in outlying areas.

Technical advice and service
from all **BLAUPUNKT**
dealers and



Achelis (Kenya) Limited

Sadler Street, P.O. Box 30378, Tel. 24115/25480, Nairobi
Also at: **MOMBASA — KAMPALA — DAR-ES-SALAAM**
MWANZA — ZANZIBAR

300/-

Benson

Formidable!



PEUGEOT

mais certainement

A SUPERB CAR FOR FORMIDABLE ROAD CONDITIONS

Marshalls - the Peugeot people

PRINTED BY ZENITH PRINTING WORKS LTD. P.O. Box 2453, NAIROBI