



---

---

BUY MORE FOR LESS

REMEMBER

**SUPERMARKET**

CUTS YOUR COSTS.....

For the Greatest Display of

ALL YOUR REQUIREMENTS

UNDER ONE ROOF

THERE IS NO PLACE LIKE

THE

**SUPERMARKET**

In the whole of East Africa!

LOW PRICES

COURTESY

SERVICE

AT

**SUPERMARKET LTD.**

Aga Khan Walk

City Square

P.O. Box 971

Tel.: 27001/2/3

---

---

# SENIOR SERVICE

## KING SIZE FILTER



A filter cigarette you can really taste  
**20 CIGARETTES FOR 3'70**

I'm jist a girl that cain't say no to a

# Martell Brandy



**Jardin**  
WINE MERCHANTS

Sole Agents: NAIROBI — MOMBASA — KAMPALA — DAR-ES-SALAAM.

SHOP AT

# H. H. WELLS

**FAMILY BUTCHER**

Lavington Green

FOR BEST QUALITY

**BEEF, LAMB and PORK**

---

**TURKEYS, CAPONS, DUCKS**

**HOME-MADE SAUSAGES, PORK PIES**

**COOKED TONGUE and HAM.**

---

# ALAN BOBBE'S BISTRO

is in **CALTEX ARCADE,**

**CALTEX HOUSE,**

**Koinange Street.**

.... four minutes ride in a  
Surrey (with or without a fringe)

**ENJOY YOUR DINNER AT**

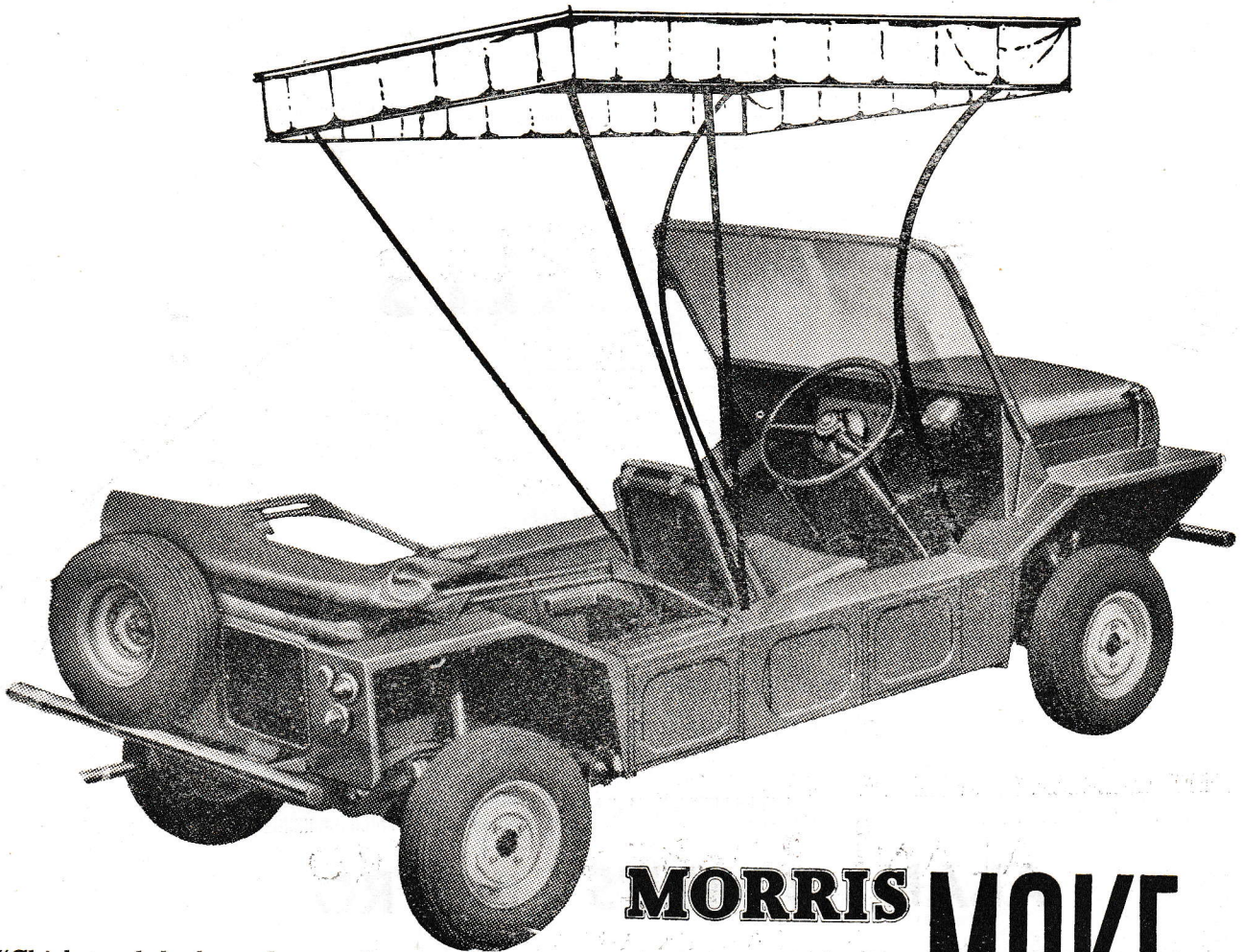
**THE BISTRO .... but remember**

**to book. Phone 21152**

---

**Regret closed on 12th and 14th December**

**for JAMHURI CELEBRATIONS**



"Chicks and ducks and geese have to skurry  
When the Moke arrives in a hurry,  
When the Moke arrives in a hurry,  
With the fringe on top".

# MORRIS mini-MOKE

*Half the cost to buy - Half the cost to operate*

**MULTI-PURPOSE VEHICLE AS SURE  
FOOTED AS A CAT. THE RUGGED  
RUN-ABOUT WITH A THOUSAND  
USES.**

Fantastic economy and over 40 miles per gallon on rough going.

You can see and try the MORRIS MINI-MOKE at

**BENBROS MOTORS KENYA LTD.**

Malik Street, P.O. Box 23, Nairobi.

KENYA NATIONAL THEATRE  
THE NAIROBI CITY PLAYERS

PRESENT

**OKLAHOMA!**

Music by RICHARD RODGERS

Book and Lyrics by OSCAR HAMMERSTEIN 2nd

with

**ANNE JAMES — ALEX ROSS — PAMELA BULL**

Musical Director: REG MANUS

Costumes: MARY EPSOM

Choreography: JAYNE CRADDOCK

The entire production under the Direction of  
**ROBERT YOUNG**

Assisted by  
**BRYAN EPSOM**

SYNOPSIS OF SCENES

ACT 1

ACT 2

SCENE

- I The Front of Laurey's Farmhouse.
- II The Smoke House.
- III A Grove on Laurey's Farms.

SCENE

- I The Skidmore Ranch.
- II The Skidmore's Kitchen Porch.
- III The Back of Laurey's Farmhouse.

Time: Just after the turn of the century.

Place: Indian Territory (Now Oklahoma).

**INTERVAL OF 15 MINUTES BETWEEN THE ACTS**

---

---

# OKLA

Music by **RICHARD ROGERS**

**CHARACTERS in**

<i>Aunt Eller</i> .....	DOROTHY PATIENCE
<i>Curly</i> .....	ALEX ROSS
<i>Laurey</i> .....	ANNE JAMES
<i>Ike Skidmore</i> .....	FRANK MERCIER
<i>Slim</i> .....	DOUGLAS PREVETT
<i>Will Parker</i> .....	JACK HIGHAM

*Cord Elam* .....

*Principal Dancers:* JAYNE CRADDOCK \* AN

*Ladies of the Chorus*

Helen Bowyer, Dorothy Gibbs, Epp Sundstrom, Chantal de Chazal, Carolyn Davies,  
Barbara Taylor, Doris Gardner, Joanna Dudley Rollinson, Margaret Ladden,  
Sonia Molveg, Lesley Jeffreys, Deborah Blackman, Lindy Blackman,  
Sylvia Thorner, Mary Thornton, Maureen Deacon.

Joyce Mills, Sandra Bird, Sheila McKnight, Louise Bosch,

Jane McNaughton, Esme da Costa, Maureen Deacon.

**Musical Director: REG MANUS**

**Directed by R**

**Assistant Director**

---

---

*Madame de Haaff Limited*



---

---

# H O M A !

Book and Lyrics by OSCAR HAMMERSTEIN 2nd

in order of appearance

<i>Junior</i>	.....	.....	.....	.....	.....	.....	DAVID COLLINS
<i>Jud Fry</i>	.....	.....	.....	.....	.....	.....	BILL GODDEN
<i>Ado Annie Carnes</i>	.....	.....	.....	.....	.....	.....	PAMELA BULL
<i>Ali Hakim</i>	.....	.....	.....	.....	.....	.....	FRANK HORLEY
<i>Gertie Cummings</i>	.....	.....	.....	.....	.....	.....	ANNE PRICE
<i>Andrew Carnes</i>	.....	.....	.....	.....	.....	.....	JOHN CAMPBELL

..... DENIS PATIENCE

..... ANNE PRICE \* MEL McCAW \* JEREMY HURLES

CHORUS

*Gentlemen of the Chorus*

Walter Gardner, Peter Clarke, Kenneth Latham, Douglas Gorton, Hamish Ure,  
Chris Cawthorne, Nigel Henzell-Thomas, Roger Hawkins, Charles Hooker.

DANCERS

Mike Herbert, Richard Davies, Don Schramm, John Peter,

David Viljoen, Ali Abubaker, Roger Hawkins.

ROBERT YOUNG

Director: BRYAN EPSOM

Choreographer: JAYNE CRADDOCK

---

---

*ited for fashions that matter !*

NEW STANLEY ARCADE — NAIROBI

**The Nairobi City Players wish to express their thanks and appreciation to:—**

Robert Harrison-White for the loan of the Surrey (with the fringe on top).  
The Officer in charge of Firearms Bureau for loan of firearms.  
The Headmaster, Westlands School for rehearsal facilities.  
The Modern School of Dancing for rehearsal facilities.  
Raper & Pringle for loan of saddle.  
Kurji Kursanji for loan of rocking chair.  
The Theatre Group for loan of tights.  
Michael Hall, Kathleen Maskell and Madeleine Hawkins for their untiring work as rehearsal pianists.  
Geoffrey Knight for his invaluable assistance at chorus rehearsals.  
To the members of the cast, their relatives and friends and the many other willing helpers who have assisted in so many ways in the production.

---

Ladies tailoring by P. D. Bhadresa.  
Materials supplied by Chunilal Bharmal & Sons.  
Gentlemens tailoring by Haria Cash Stores.  
Boots made by Prison Industries.  
Wigs by Nathanwigs, London.  
Poster design by Frank Horley.  
Photographs by Fontaine-Geary.

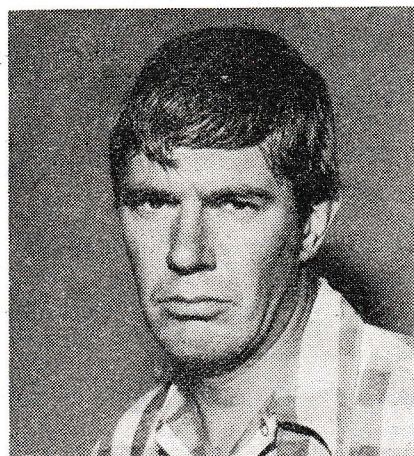
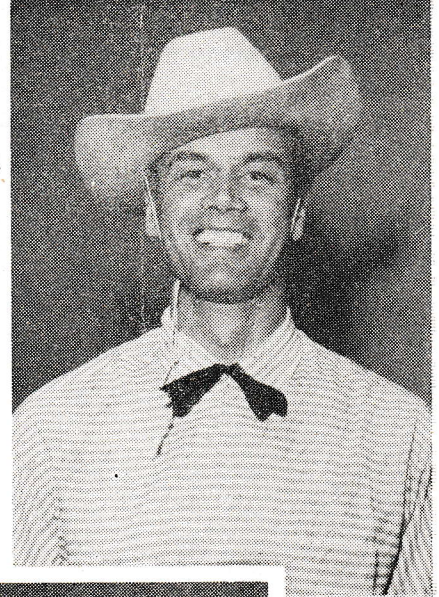
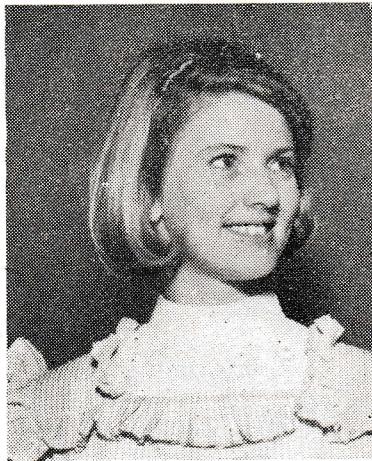
---

**FOR THE NAIROBI CITY PLAYERS**

Stage Manager ... .. Mac Spence.  
Assistant Stage Managers ... .. Fred Veal, Ted Downer.  
Property Mistress ... .. Kathleen Veal  
assisted by .. Marianne Stevenson.  
Costumes ... .. Mary Epsom.  
assisted by .. Marilyn Conway-Shepherd and  
Marianne Stevenson.  
Set Designer ... .. Meryl Evans.  
Painted by Meryl Evans, Penny Kirton, Wendy Aves, John Hayward and Jenny  
O'Toole. Assisted by Kathleen Veal, Christine Lincoln and Mary Campbell.  
Sets built by ... .. Fred Veal.  
Assisted by Denis Patience, Jack Longford, Ted Downer, Chalky White and  
Avito De Silva.  
Backstage Team:—Christine Lincoln, Wendy Aves, Anne Keighley-Bell, Daphne  
Deakin, Jack Longford, Chalky White, Alan Taylor, Ron Gray, Andrew Warwick,  
Adrian Larkins, William Whiston and Hugh Epsom.  
Business Manager ... .. Bryan Epsom.  
Publicity and Programme ... .. Leonard Pierrepoint.  
Production Secretary ... .. Chris Ainsworth.

**FOR THE NATIONAL THEATRE**

Manager ... .. G. T. Stoneham.  
Theatre Assistant ... .. Ewart Norris, D.F.M.  
Theatre Electricians ... .. George Watson and Ted Hughes.



**Top L. to R.: Anne James as Laurey, Alex Ross as Curly.**  
**Centre L. to R.: Frank Horley as Ali Hakim, Pamela Bull as Ado Annie and Jack Higham as Will.**  
**Bottom L. to R.: Bill Godden as Jud Fry and Dorothy Patience as Aunt Eller.**

# MUSICAL NUMBERS

## OVERTURE

### Act I

- |          |                                     |                                    |
|----------|-------------------------------------|------------------------------------|
| Sc. I.   | "Oh, What a Beautiful Mornin' "     | Curly.                             |
|          | "The Surrey With the Fringe on Top" | Curly, Laurey and Aunt Eller.      |
|          | "Kansas City"                       | Will, Aunt Eller and the boys.     |
|          | "I Caint' Say No"                   | Ado Annie.                         |
|          | "Many a New Day"                    | Laurey and the girls.              |
|          | "It's a Scandal! It's an Outrage"   | Ali Hakim with the girls and boys. |
|          | "People Will Say We're in Love"     | Curly and Laurey.                  |
| Sc. II.  | "Pore Jud is Daid"                  | Curly and Jud.                     |
|          | "Lonely Room"                       | Jud.                               |
| Sc. III. | "Out of My Dreams"                  | Laurey and the girls.              |

### The Dream Ballet

### ACT II

- |          |   |   |
|----------|---|---|
| Sc. I.   | "The Farmer and the Cowman"                     | Carnes, Aunt Eller, Curly, Will, Ado Annie, Junior, Ike, Slim and the boys and girls. |
|          | "All er Nuthin' "                               | Ado Annie, Will and the dancing girls.  |
| Sc. II.  | <i>Reprise.</i> "People Will Say We're in Love" | Curly and Laurey.   |
| Sc. III. | "Oklahoma"                                      | Curly, Laurey, Aunt Eller, Carnes, Ike, Junior, Cord Elam & ensemble                  |
|          | "Oh, What a Beautiful Mornin' "                 | Laurey, Curly and ensemble.   |
|          | Finale  | Entire company.   |

# ORCHESTRA

## Violins

Douglas Rice  
Alan Mills  
Luis Pires  
Walter Fernandes

## Cello

David Filmer

## Bass

Jan Filmer

## Flutes

Paddy Walsh  
Hugh Woolf

## Oboe

Tony Noronha

## Clarinets

Douglas Turner  
Julia Gaitskell

## Trumpets

Richard Peifer  
Derek Haylock

## Saxophone

Arthur Sutton

## Organ

Michael Hall

## Piano

Geoffrey Knight/Kathleen Maskell

## Percussion

Leo Pardo

The Nairobi City Players express their gratitude to the  
Director of Music, Kenya Army  
for the loan of percussion instruments.

**Musical Director: REG MANUS**



ALWAYS A STAR  
ATTRACTION



EAST AFRICA'S  
FAVOURITE  
GIN



---

**FRESHER ...**



**.... because delivered quicker!**

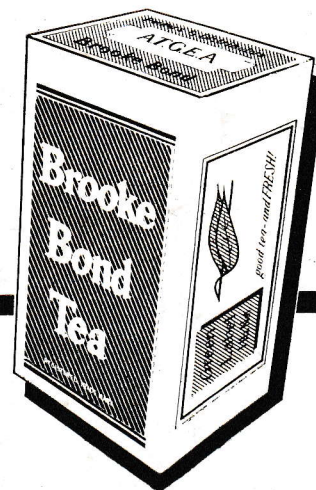
Brooke Bond's unique delivery system ensures that their teas reach consumers in the freshest possible condition.

Every day their fleet of little red vans rush supplies of their teas to more than 40,000 retail outlets throughout East Africa.

**Brooke Bond**  
THE TEA YOU CAN TRUST!

---

**THE ASSOCIATED TEA GROWERS OF EAST AFRICA**



---

Printed by Zenith Printing Works Ltd., P.O. Box 2453, Nairobi.