



# ROSS

**KENYA NATIONAL THEATRE**

**JUNE 1964**

# THE KING SIZE CIGARETTE OF INTERNATIONAL SUCCESS



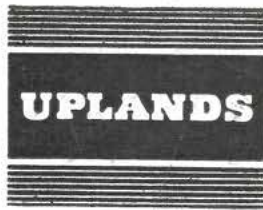
## **STATE EXPRESS FILTER KINGS**

In Africa, and in all leading countries throughout the world, people who prefer the best in king size filter smoking are asking for State Express Filter Kings... 'the best cigarettes in the world'



**FIT FOR A KING  
OF THE DESERT...  
OR FOR  
YOU!  
KENNA INSTANT  
COFFEE**

**DISTRIBUTED IN EAST AFRICA  
BY BROOKE BOND**



**PURE LARD**  
*for perfect cooking*  
**GAMMON STEAKS**  
*for perfect eating*



# ALWAYS A STAR PERFORMER



## EAST AFRICA'S FAVOURITE GIN

**THE NAIROBI CITY PLAYERS**

**PRESENT**

**DONALD WHITTLE**

**in**

**“ROSS”**

**A PLAY IN TWO ACTS**

**BY**

**TERENCE RATTIGAN**

**directed by LEONARD PIERREPOINT**

**Scenery designed by MERYL EVANS**

**Costumes by MARY EPSOM**

**A STORY OF**

**LAWRENCE OF ARABIA**

**“His name will live in history.”**

**(KING GEORGE V)**

**“His name will live in the traditions of the Royal Air Force; it will live  
in the annals of war and in the legends of Arabia.”**

**(Sir WINSTON CHURCHILL)**

**P. D. BHADRESA**

**LADIES AND GENTS TAILOR & OUTFITTER.**

**ALLANCE BUILDING, 1st FLOOR.**

**REATA ROAD.**

**P. O. Box 10458 NAIROBI Phone 22646**

in the order

<i>Flight Lt. Stoker</i>	. . . . .	DON SELWAY
<i>Flight Sgt. Thompson</i>	. . . . .	DENIS PATIENCE
<i>Aircraftman Parsons</i>	. . . . .	DAVID COLLINS
<i>Aircraftman Evans</i>	. . . . .	JEREMY CORNISH
<i>Aircraftman Dickinson</i>	. . . . .	WILFRED MOORE
<i>Aircraftman Ross</i>	. . . . .	DONALD WHITTLE
<i>Aircraftman (Mouth Organist)</i>	. . . . .	DON SPRAGUE
<i>Aircraftman</i>	. . . . .	WALTER GARDNER
<i>Franks, the Lecturer</i>	. . . . .	LESTER ROGERS
<i>General Allenby</i>	. . . . .	BRYAN EPSOM
<i>Ronald Storrs</i>	. . . . .	GODFREY HERBERT
<i>Colonel Barrington</i>	. . . . .	ROBERT CHEETHAM
<i>Sheik Auda Abu Tayi</i>	. . . . .	RURIK RONSKY

*Turkish Soldiers*

Walter Gardner, Cyril Tynham, Michael  
Samuel Ruoro, Don

*Synopsis*

The action of the Play begins and ends  
in the winter of 1922. The central  
in the Middle East.

**ACT I**

- Scene 1.* An office at the Depot. Morning.
- Scene 2.* The yard of the Depot. Afternoon.
- Scene 3.* A hut at the Depot. The same night.
- Scene 4.* An Arab tent.
- Scene 5.* A desert place.
- Scene 6.* The Turkish Headquarters.
- Scene 7.* Outside Auda's tent.
- Scene 8.* A small hut in a British Army camp near Suez.

There will be an interval of

THE PLAY DIRECTED BY

SS

by  
**RATTIGAN**

Characters  
their appearance

<i>A Turkish General</i>	PETER PEARCE
<i>Hamed, an Arab</i>	ROBERT NEIL
<i>Rashid, an Arab</i>	MEL McCAW
<i>A Turkish Captain</i>	SBISH TRZEBINSKI
<i>Turkish Orderly</i>	XAVIER ALMEIDA
<i>Kerim, an Arab</i>	ALBERT FERNANDES
<i>A Turkish Soldier</i>	FLAVIAN TAVARES
<i>A British Corporal</i>	JACK LONGFORD
<i>A. D. C.</i>	JEREMY HURLES
<i>A Turkish Sergeant</i>	ALAN TAYLOR
<i>A Photographer</i>	MICHAEL TOWNS
<i>An Australian Sentry</i>	CYRIL TYNHAM
<i>Flight Lt. Higgins R.F.C.</i>	MAC SPENCE
<i>Group Capt. Wood</i>	ROBERT KINGSTON DAVIES

Characters and Arabs:

Towns, Xavier Almeida, Flavian Tavares,  
Sprague, Alan Taylor.

of Scenes:

at a Royal Air Force Depot, near London,  
the two years 1916-1918 and are set

## ACT II

- Scene 1.* Allenby's room in G.H.Q., Cairo.
- Scene 2.* The Turkish Headquarters.
- Scene 3.* A railway embankment.
- Scene 4.* The Turkish Headquarters.
- Scene 5.* Allenby's field Headquarters at Gaza.
- Scene 6.* Outside Lawrence's tent near the village of Tafas.
- Scene 7.* The office of the Depot. Morning.
- Scene 8.* The hut at the Depot.

fifteen minutes between the Acts

LEONARD PIERREPOINT



## ACKNOWLEDGEMENTS

The Nairobi City Players wish to express their gratitude for invaluable advice and assistance on Service uniforms and equipment to:—

Brigadier D. W. Jackson O.B.E. and officers of Headquarters East Africa Command.

Group Captain I. S. Stockwell D.F.C. A.F.C. and officers of the Royal Air Force Headquarters, East Africa.

Lt. Colonel D. G. F. Pringuer and officers of the Kenya Police Headquarters.

The Donovan Maule Theatre.

And many other friends who have loaned items of uniform.

---

The Nairobi City Players wish to express their appreciation and thanks to:—

Shirley Veal and Bill Richmond for advice and assistance with music and sound effects.

Mr. Hazeldene of the McMillan Memorial Library for research and loan of properties.

Dick Thomsett and Caleb Akwara for production of slide transparencies.

Michael Richmond for loan of slide projector.

Raper and Pringle for valuable assistance.

Eastern Carpet Emporium for loan of carpets.

Haria Cash Stores and P. D. Bhadressa for tailoring.

Oriental Footwear for boots.

Jardin Ltd. for drinks, glasses and cigars.

---

### FOR NAIROBI CITY PLAYER

<i>Stage Director</i>	. . . . .	Dorothy Patience
<i>Lighting Assistant</i>	. . . . .	Mac Spence
<i>Properties</i>	. . . . .	Ann Keighley Bell & Pamela Bull
<i>Wardrobe</i>	. . . . .	Mary Epsom & Marilyn Conway Shepherd.
<i>Set designer</i>	. . . . .	Meryl Evans
<i>Business Manager</i>	. . . . .	Bryan Epsom
<i>Publicity and Programme</i>	. . . . .	Robert Cheetham
<i>Production Secretary</i>	. . . . .	Mary Stokes

*Set Constructed by:* Fred Veal, Denis Patience, Jack Longford, Ted Downer, Mac Spence, George O'Hare, Peter Clarke, Tony Bishop, Peter Spencer, Ron Grey, Jeremy Hurles, Avito Da Silva, Samuel Ruoro, Pamela Bull, Winifred Ferguson, Elaine Parsons, Jackie Williams, Dorothy Patience.

*Stage Assistants:* Fred Veal, Ted Downer, George O'Hare, Peter Clarke, Ron Gray, George Grant, Brian Stott, Adrian Larkins, Colin Patience, Avito Da Silva, Kay Moore.

Allenby's Headquarters Scene at Cairo painted by Derry Shannon.

Turkish Headquarters Scene painted by Mike Wilkey.

Gaza Headquarters Scene painted by Meryl Evans.

Assistants to scenic artists: Don Selway, Mary O'Hare and Susan Rogers.

### FOR KENYA NATIONAL THEATRE

<i>Manager</i>	. . . . .	G. T. Stoneham
<i>Theatre Assistant</i>	. . . . .	Ewart Morris, D.F.M.
<i>Theatre Electrician</i>	. . . . .	George Watson

**P. D. BHADRESA**

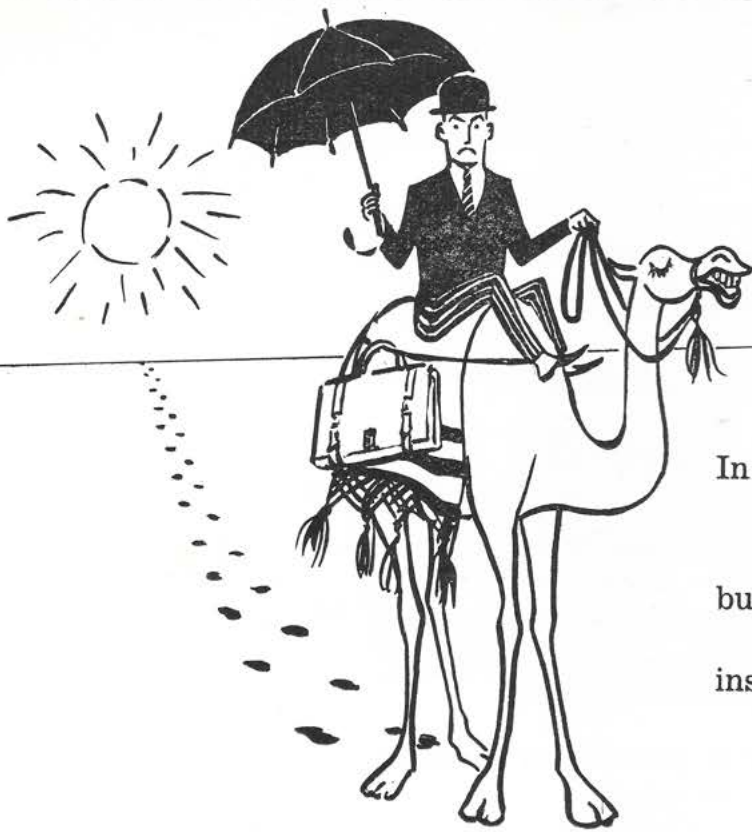
LADIES AND GENTS TAILOR & OUTFITTER

ALL'ANCE BUILDING, 1st FLOOR

REATA ROAD

P. O Box 10458 NAIROBI Phone 27646



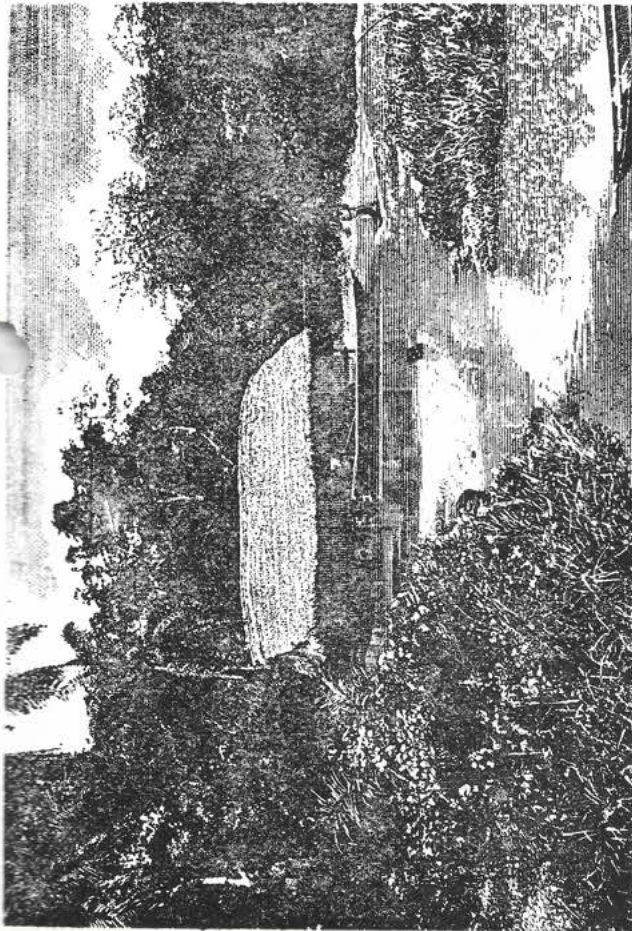


In the desert you might settle for a camel  
for convenience . . . . .

but wherever you go you'd be wise to  
insist on VAUXHALL FOR VALUE

SEE FOR YOURSELF AT  
NAIROBI.

and Motor Mart Branches throughout East Africa



for malaria . . .

**'Nivaquine'**  
trade mark

brand  
CHLOROQUINE SULPHATE

effective prevention or treatment

Tablets and syrup.

Solution for injection

An M&B brand Medical Product

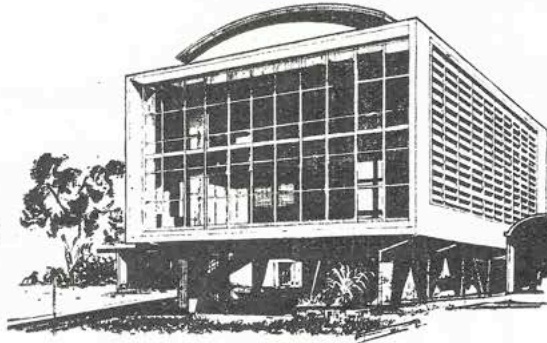
MA9352/BS

Manufactured by

**MAY & BAKER LTD** · DAGENHAM · ENGLAND

Branch Office

P.O. BOX 30104 · NAIROBI · TEL: 58070 and 58878



Visit the **KENYA BUILDING CENTRE**

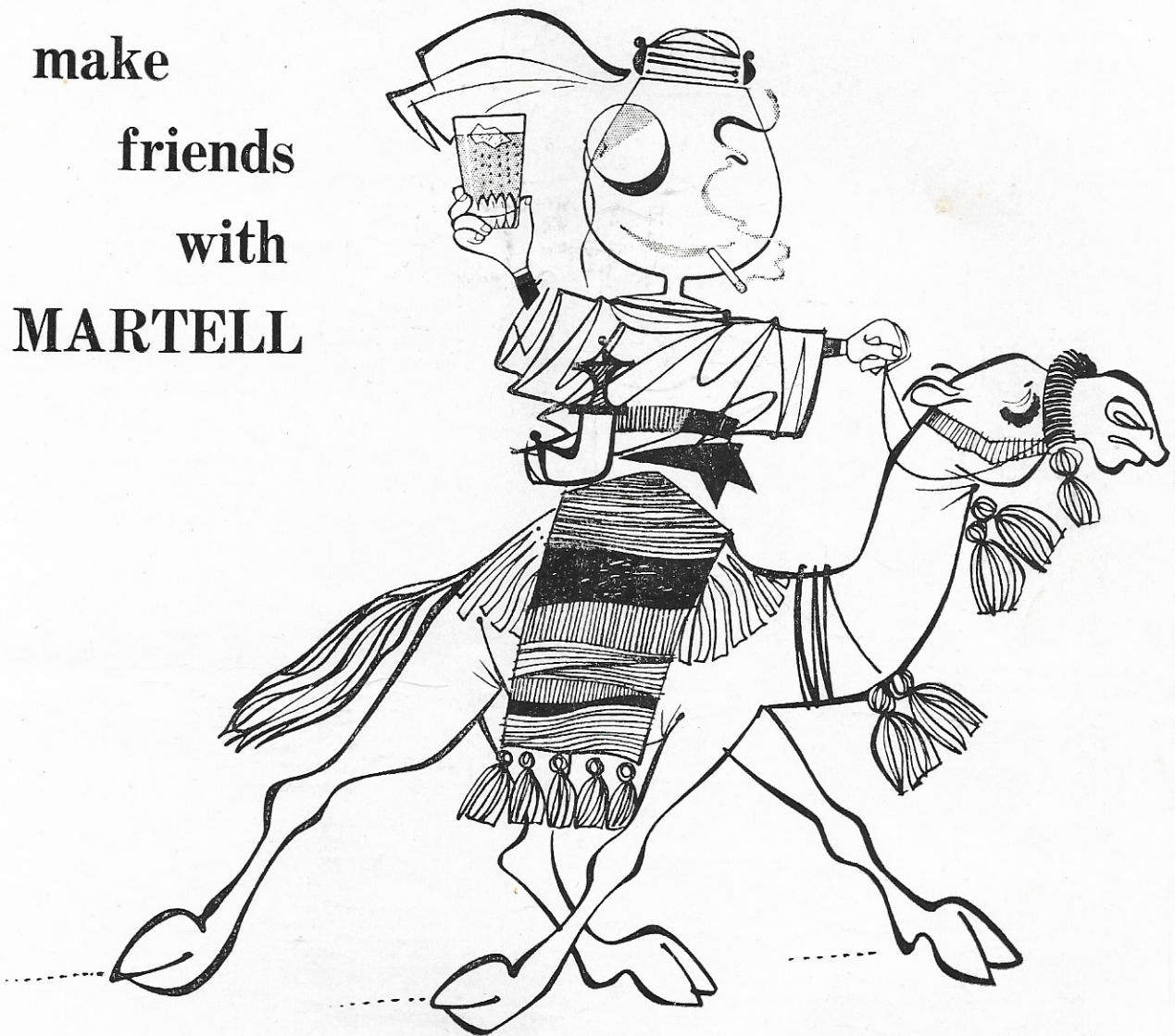


Architects, builders, contractors and "do-it-yourselfers" will all find something to interest them at the Building Centre. There are more than 250 permanent exhibits of manufacturers' goods, and descriptive literature is available, providing you with the opportunity to compare products so that you find the best for your purpose. The Building Centre is open from: Monday to Friday 9 a.m. to 4.30 p.m. Saturday 9 a.m. to 12 noon.

P.O. Box 30260, HARAAMBEE AVENUE Tel: 27411. Ext. 454  
NAIROBI



make  
friends  
with  
**MARTELL**



**MARTELL** is available everywhere-  
even at a Howeitat Well!

SOLE AGENTS: NAIROBI, MOMBASA, KAMPALA, DAR ES SALAAM.





Alone or  
with  
company\*



## Schweppes Bitter Lemon

\* Adults sometimes add gin

SCHWEPPEVERESCENCE LASTS THE WHOLE DRINK THROUGH