

NATIONAL THEATRE

**THE NATIONAL THEATRE COMPANY
OF KENYA**

in association with THE NAIROBI CITY PLAYERS

presents



**THE LION AND
THE JEWEL**

by **WOLE SOYINKA**

SEPTEMBER, 1970

things
go better
with
big, big
Coke

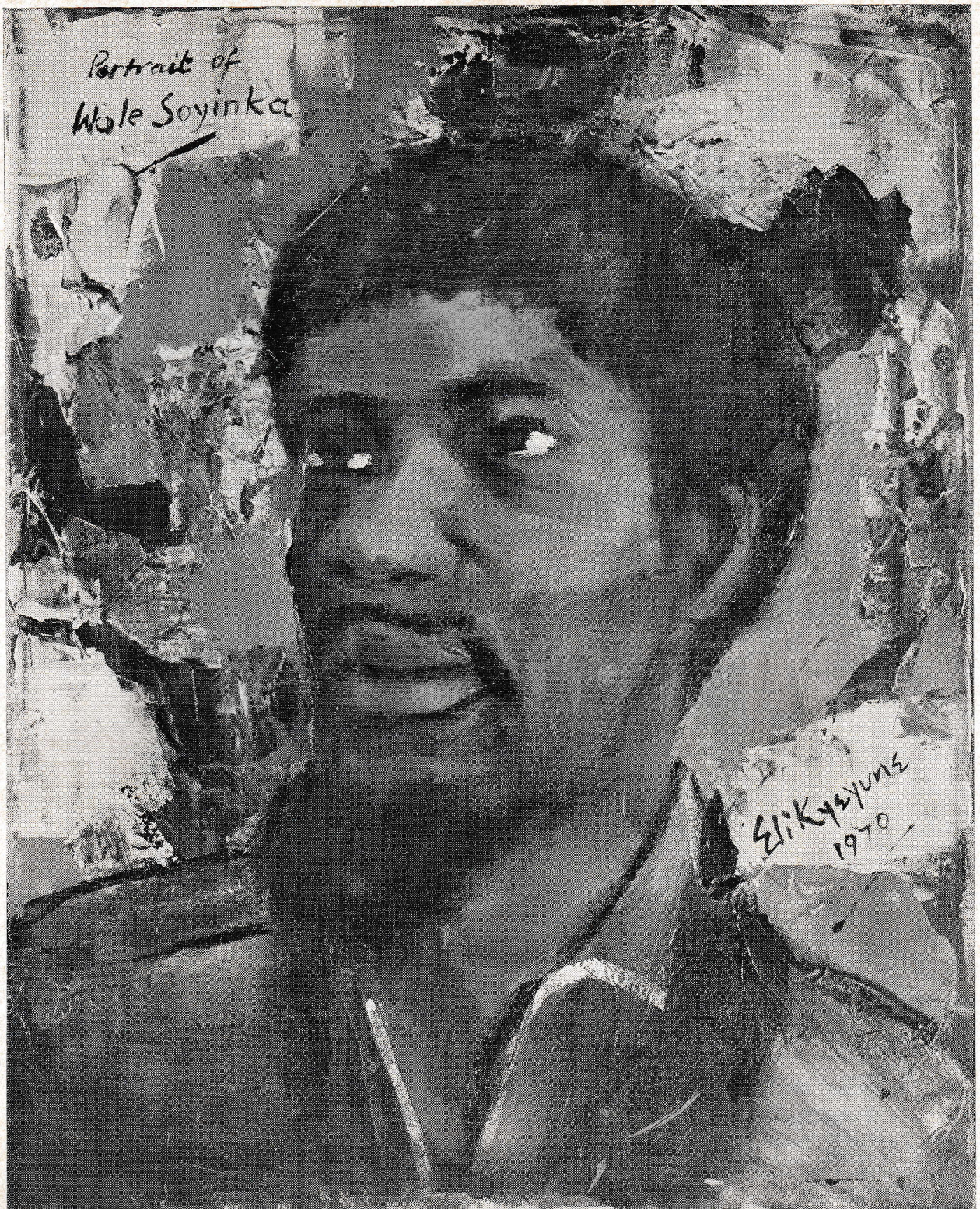
TRADE MARK REG.



"Coca-Cola" and "Coke" are the registered trade marks of
The Coca-Cola Company.

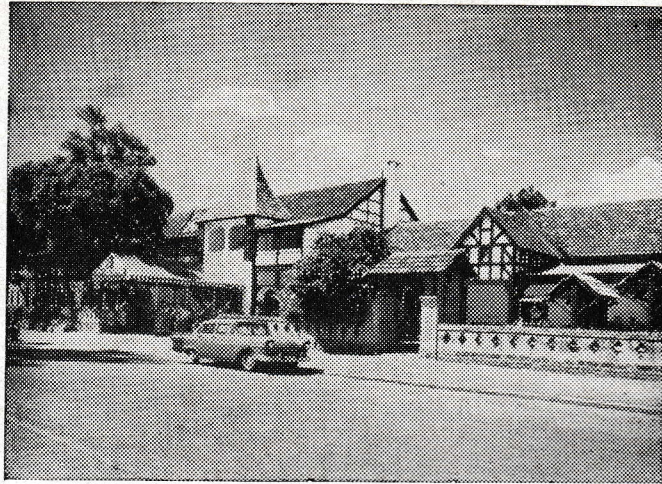
Bottled under authority of The Coca-Cola Company by:-
Coca-Cola Bottling Co. of Nairobi.

GN/CC/2092



WOLE SOYINKA

author of "THE LION AND THE JEWEL"
(Specially painted for this production by ELI KYEYUNE)



THE NORFOLK HOTEL

What better way to spend

a delightful evening

than to dine at the Norfolk Hotel

in complete comfort and relaxation !

A superb menu is our speciality.

7414-11378



Follow
the leader...

drink
White Label
Scotch
Whisky.



From a powerful land steeped in tradition.
A strong country, a country that still produces
the finest whisky in the world — White Label
Scotch Whisky. Insist on it.

Jockey Club of Kenya

Beautiful Ngong Racecourse.

It's informal – enjoyable and exciting
at the Races.

All Races started from stalls.

Bookmakers and Tote.

Make a Note of the Following Dates:—

SUNDAY, 17th MAY, LIMURU

SUNDAY, 20th SEPTEMBER

SUNDAY, 4th OCTOBER) SPONSORED BY
SUNDAY, 11th OCTOBER) EAST AFRICA BREWERIES

SUNDAY, 18th OCTOBER

SUNDAY, 1st NOVEMBER) SPONSORED BY
DINERS CLUB

FIRST RACE 2.30 p.m. each day.

Free Car Park Free Children's Creche

LUNCHEONS – TEAS – BARS.

**COME RACING AND BRING THE
FAMILY!**

Membership Enquiries to:—

THE SECRETARY, P.O. Box 373, NAIROBI

COMING EVENTS . . .

at the National Theatre

September	22nd & 23rd	CONCERT — BRAUNFELS TRIO
	29th	PIANO RECITAL — JOHN OGDON
	30th	VARIETY — BAPTIST MISSION
October	1st	VARIETY — BAPTIST MISSION
	4th	PIANO RECITAL — FRANZ PETER GOEBELS
	10th	VARIETY — BAPTIST MISSION
	12th — 14th	ISRAELI DANCERS
	24th	CONCERT — NAIROBI ORCHESTRA
November	11th — 14th	A "WHODUNNIT" (ORIENT ART CIRCLE)
	18th & 20th	PIANO RECITAL — RICHTER HAASER
December		MUSICAL — "THE PAJAMA GAME" (NAIROBI CITY PLAYERS)

at the Cultural Centre Hall

September 30th — October 10th	"THE ODD COUPLE" (THEATRE GROUP)
-------------------------------	----------------------------------

For that "special" SIGN or

. . . . for SIGNS of all descriptions

O. BIRINDELLI
ENGRAVERS

"THE name for SIGNS"

YORK STREET, (Corner Koinange St.) (Opp. Catholic Bookshop)

Telephones 21132/23444

P.O. Box 30343 — NAIROBI

OXFORD

UNIVERSITY PRESS

New Drama from Africa is an attractive series of original plays arising out of, and whose themes are of relevance to, Africa. The series will include works in English and Kiswahili by new as well as established playwrights. The first four titles already published are concerned basically with contemporary issues that arises from the confrontation of peoples of different race, background, or culture. They could, with safety, be described as plays of social conflict, two of them resorting to historical events for their inspiration, the other two representing these forces of disruption through two characters in each case, one black and the other white. Each play makes vivid and stimulating reading, and the plays are linked by kindred intellectual questioning, and emotive presentation of themes that each author displays.

No. 1 The Death of Chaka Shs. 4/50
by Seydou Badian

Translated from the French by Clive Wake, it is an account of Chaka's assassination by his generals who, because of jealousy, were ready to destroy the mighty kingdom he had built. In the context of current political events in Africa, Chaka's downfall still has parallels today.

No. 2 Not Now, Sweet Desdemona Shs. 5/-
by Murray Carlin

A dialogue for black and white within the realm of Shakespeare's OTHELLO.

No. 3 The Thousand Shs. 6/50
by Murray Carlin

A confrontation in words and action, between an imprisoned black nationalist revolutionary and an eccentric white visitor in the grab of an Anglican priest.

No. 4 Kinjeketile Shs. 4/-
(Swahili) Ebrahim N. Hussein

The play depicts the bloody Maji Maji Resistance War between the indigeneous people of Tanzania and the German colonialists at the turn of the nineteenth century, by focussing attention on Kinjeketile, the seer who inspire the people to resist the foreigner.

Forthcoming

No. 5 Kinjeketile
(English) by Ebrahim N. Hussein

KENYA NATIONAL THEATRE

**THE NATIONAL THEATRE COMPANY
OF KENYA**

in association with

THE NAIROBI CITY PLAYERS

presents

**“THE LION AND
THE JEWEL”**

by **WOLE SOYINKA**

Directed by

TIRUS GATHWE

Choreography by

GEORGE MENOE

Production Co-Ordinator

ROBERT BEAUMONT

THE LION AND

by WOLE

CHARA

<i>Lakunle, a Schoolteacher</i>	MOHAMMED SAID <i>(by permission of the Headmaster of Alliance High School).</i>
<i>Sidi</i>	AURELIA WAMBALYA
<i>Sadiku, head wife of Baroka</i>	ANN WANJUGU
<i>Baroka, the Bale</i>	SETH ADAGALA
<i>Village girls</i>	ROSE MASUKA WINIFRED OGOLA DORCAS ABAT MARY MUMBI
<i>Wrestler</i>	LEONARD JUMA
<i>Surveyor</i>	THABO SKHOSANA
<i>Schoolchildren</i>	FRANCIS GAITHO JOSEPH KAMUYU WARREN NUNIS DAVID BALIDDAWA NAZARIO FERNANDES
<i>Attendant on Baroka</i>	AMOS P. NJOGU

Directed by **TIRUS GATHWE**
Production Co-Ordinator **ROBERT BEAUMONT**



BENE

THROUGH

ND THE JEWEL

OLE SOYINKA

CHARACTERS

Village Girls, Dancers & Traders IRENE NGEMA, WINIFRED OGOLA,
DORCAS ABAT, ROSE MASUKA,
MARY MUMBI, BERNADETTE OMONDI,
CELESTINE NDONJI, BERYL E. MVOYI,
ROSE KAMANDA, ANNIE KAMANDA,
FLORENCE MUTHONI

Dancers, Prisoners & Villagers MICHAEL MURITHI, GEORGE KURIA,
MIKE KIHONGE, RUPHUS MWAMBURI,
STANLEY OTWERE, THABO SKHOSANA,
RODERICK NAMAYI, AMOS NJOGU,
JEZZREL MWASHIGADI, NELSON M.
KISAGI, ANTHONY GITHERE, T. MWANGI
PETER KILEMBA, JOSEPH KIHONGE,
REUBEN MKANGULA, RICKY GITAHU

Drummers THABO SKHOSANA, REUBEN MKANGULA,
RODERICK NAMAYI.

Choreography by **GEORGE MENOE**

Costumes by **MARY EPSOM**

BROS

GHOUT KENYA.





There is always
something
rather special
about the
man who asks
for Martell
3 Star Cognac...

Try it with
dry ginger and ice
as a long cool drink.
And if you like
your drink strong
and full bodied
- try it neat.



Cognac

*Normal
sized bottles,
flasks and
miniatures
available.*



**Make friends with
Martell Cognac Brandy**

THE SCENE . . .

. is the open space between the school and the market-place
in Ilujinle, a village in Nigeria — alternating with the bedroom of
Baroka's house.

ACT I — MORNING TO NOON

Interval Fifteen Minutes

ACT II — NOON TO NIGHT

“THE LION AND THE JEWEL”

Stage Managers	DOROTHY PATIENCE : FRANCIS KIMOTHO
Set design	ROBERT BEAUMONT
Set Construction and Stage Crew	DOROTHY PATIENCE : FRANCIS KIMOTHO ROBERT KAMAU : PETER NJOROGE AMOS NJOGU : JOHN BRAITHWAITE DENIS PATIENCE : RICHARD TEMPLER : TOM MWANGI : KEN LATHAM.
Costumes	MARY EPSOM
Assisted by	Dorcas Abat : Hazel Evans : Crispina Wangare
Public Relations, Publicity	MICHAEL NDISHO : LIZA McKINNEY
Prompter	JUDYTH ROWAN

TA/LP/13690

FREE Leyland colour consultancy

*(Our Artist is
just waiting
for a call.)*



Artist is not quite the word. Though she's certainly that as well as an expert colour consultant. Her palette is the famous Leyland range of paints of over 190 carefully factory-mixed co-ordinated shades. She's waiting to plan a colour scheme with you right now. And her services don't cost you a cent. What are you waiting for?
Nairobi: 57655 • 57665 • 57675.



The paint the painters use.

THE KENYA CULTURAL CENTRE incorporates the KENYA NATIONAL THEATRE,
THE NATIONAL THEATRE SCHOOL & THE NATIONAL THEATRE COMPANY OF KENYA.

Acting President of the Governing Council NORMAN J. MONTGOMERY

Chairman of the National Theatre Committee ROBERT BEAUMONT

FOR THE NATIONAL THEATRE COMPANY OF KENYA

Director SETH ADAGALA

Business Manager GEORGE MUGELE

Stage Manager FRANCIS KIMOTHO

Assistant Stage Managers PETER NJOROGI
RODERICK NAMAYI
REUBEN MKANGULA

Publicity Officer MICHAEL NDISHO

Productions Manager TIRUS GATHWE

FOR THE NAIROBI CITY PLAYERS

Chairman PETER N. PEARCE

Business Manager BRYAN EPSOM

Treasurer DENIS PATIENCE

Executive Committee Member BENNY GOODMAN

Wardrobe MARY EPSOM, SHIRLEY BISHOP

FOR THE NATIONAL THEATRE

Manager LEO PARDO

Box Office ALBERT NUNES

Resident Stage Manager ROBERT KAMAU

Theatre Technician FRANCIS LABICHE

Lighting FRANCIS LABICHE and JASON MWAI

‘If this is Beefeater –
I know I’m welcome’

You know it’s true –
people can tell the best
from the rest.

Beefeater Gin
London Distilled

ACKNOWLEDGEMENTS

<i>Oxford University Press</i>	for permission to perform the play.	
<i>Afro-Asian Curios, Sadler House</i>	for loans of masks, spears, trophies etc.	
<i>The Headmaster, Alliance High School</i>	}	for permitting their respective students to take part in the play.
<i>The Headmistress, Pangani Girls' School</i>		
<i>The Headmistress, Ngara Secondary School</i>		
<i>The Headmistress, Huruma High School</i>		
<i>The Headmaster, Parklands School</i>		
<i>The Principal, Government Secretarial College</i>		
<i>Mr. R. B. Marks of Machakos School</i>	for loan of properties.	
<i>Treasures and Crafts Ltd., York St.</i>	for loan of lion and antelope skins.	
<i>City Park, Nairobi</i>	for loan of shrubbery.	



HILTON and INTERCONTINENTAL

*For those super africana clothes
and safari matching Separates
in Khaki Terylene/Cotton Twill.*

A MEMBER OF THE THETA GROUP



Canon for life

The Canon Auto Zoom 814 makes *all* your pictures lifelike.

The FT QL single lens reflex is a camera you'll be proud to own—it has *everything!*

See the full range at your dealer

Sole distributors

TWENTSCHE OVERSEAS TRADING CO. (ELECTRONICS) LTD.

P.O. BOX 30287 NAIROBI TELEPHONE 27895



The finest food and wines in town are yours. The Amboseli Grill features its own open griddle to ensure the very best in flavour and quality.

Why not introduce our Grill to your business friends, an ideal spot for your working lunch, or,

come in the evening with the lady in your life.

Whichever you choose we guarantee you'll be back again!

See you tonight?

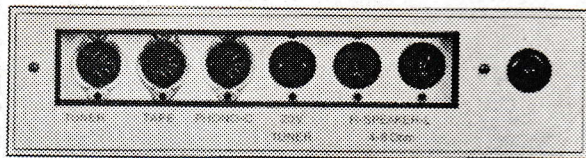
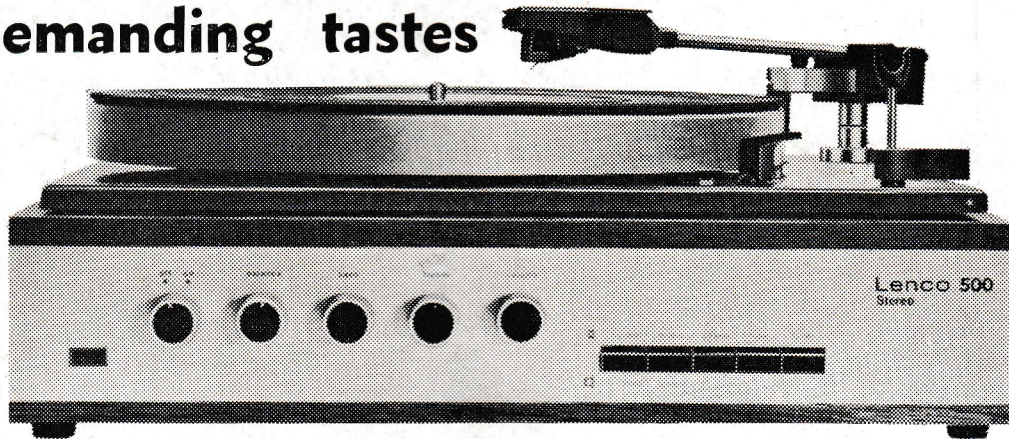
amboseli grill

KAC/HILTON

NAIROBI HILTON 

Lenco 500

The inexpensive
stereo-set for
demanding tastes



PRICE COMPLETE 2,420/-

A valuable stereo-set that fits easily into any bookcase. The Lenco 500 set is a combination of a 4-speed precision record-player with built-in cartridge Shure M75 MB and a fully transistorised stereo amplifier, both fitted into an attractive, shock-free case with a practical plexiglass protective cover. In addition you get two dynamic compact loudspeakers with a music power of 2 x 8 Watts.

You can play both mono and stereo records up to 12in. diameter on the extra-heavy turntable. The speed is freely adjustable throughout the scale of 30—86 r.p.m., with click-in stops for 16, 33, 45 and 78 r.p.m.

The hydraulic, semi-automatic device for setting down and raising the tone arm affords maximum protection to records and cartridge. The special "loud-soft" push button enhances bass and treble tones and thus provides a full range of tone even during soft playing. A stereo-set with excellent body of tone hitherto only available in large and expensive models.

Lenco

Please write for descriptive brochure and price list. Other complete stereo systems are available.

THE WORLD'S FINEST RECORD PLAYERS (Made in Switzerland)

A full range may be seen at:

B.M.T. PHOTRONICS LTD.

Caltex House (opposite Bistro) Koinange Street,
P.O. Box 1417, NAIROBI Tel. 23038.