

ncp

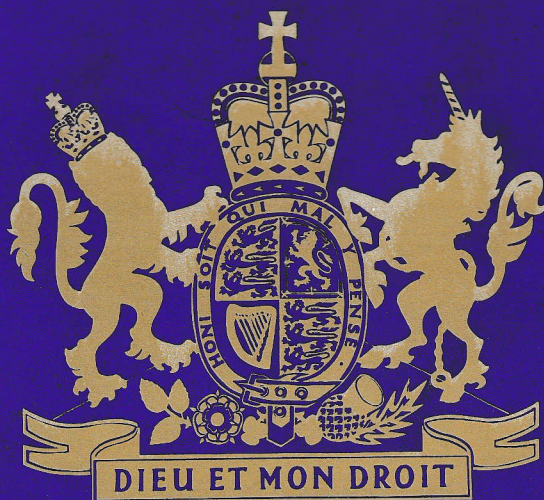
Kenya National Theatre

Nairobi City Players

present

Annabel Maule

in



**CROWN
MATRIMONIAL**

by ROYCE RYTON

directed by ANNABEL MAULE

OCTOBER 1-11, 1980



*First on your programme
of business development
... talk to*

DATA CENTRE

**EAST AFRICA'S LEADING
COMPUTER BUREAU**

**DATA
CENTRE**

DATA CENTRE LIMITED
Caxton House, Kenyatta Avenue
P.O. Box 30286, Nairobi, Kenya
Telephone 33491 (4)
Telex 22187

Is your home
protected
inside and outside?



Homes and buildings need protection - from the sun, rain, wind, dust and dirt - the kind of protection that only Robbialac Paints can give. Protect your investment with tough, easy-to-use, Robbialac Paints.

Robbialac Paints

for decoration and protection



FREE

Colour and Technical
Advisory Service
Call Nairobi 559722



Smooth International Embassy

The smooth way
to go places.



Nairobi **ncp** City Players

Present

ANNABEL MAULE

in

**CROWN
MATRIMONIAL**

by ROYCE RYTON

Directed by

ANNABEL MAULE

SET DESIGN BY BENNY GOODMAN

DECOR BY LEONARD MOORE LIMITED

COSTUMES BY MARY EPSOM

at

THE KENYA NATIONAL THEATRE

1st to 11th October 1980

• LAKE BARINGO CLUB • OUTSPAN HOTEL • LAKE NAIVASHA HOTEL • OUTSPAN HOTEL •

LAKE BARINGO CLUB • OUTSPAN • LAKE NAIVASHA HOTEL

LAKE BARINGO CLUB • OUTSPAN • LAKE NAIVASHA HOTEL

THREE GREAT WEEKENDS

So near and yet so far. Get away from it all and enjoy the luxuries Block Hotels have laid on for you - so near to Nairobi, but in a world of their own.



Lake Baringo Club

Situated on the shores of one of the Rift Valley's most exciting lakes. Baringo is becoming increasingly famous for its multitude of birds which our Resident Ornithologist will be pleased to identify. From the club, trips can be arranged to nearby Lake Bogoria, home of a 'sea' of flamingos and bubbling hot springs.



The Outspan Hotel

An ideal weekend spot, suitable for the entire family. The Outspan has numerous sports facilities for the energetic - including squash, tennis, golf and swimming, not to mention excellent trout fishing. From the hotel you can visit the nearby Aberdares National Park, home of the elusive leopard and many other wildlife species.



Lake Naivasha Hotel

Only an hour's drive from Nairobi where you can enjoy quiet relaxing weekends watching the world of birds go by, or a leisurely boat ride on the lake. Trips from the hotel can be arranged to the Crescent Island Sanctuary, where you can walk freely amongst the game.

• LAKE BARINGO CLUB • OUTSPAN HOTEL • LAKE NAIVASHA HOTEL • OUTSPAN HOTEL •

Bunson for travel

WE DON'T
SELL SERVICE ..
WE GIVE IT.



P.O. Box 45456 NAIROBI. Telephone: 21992, Telex: 22071



THE DIRECTOR

ANNABEL MAULE

Annabel Maule made her professional debut on the 20th September, 1934, just twelve days after her twelfth birthday, in Moliere's "Love is the Best Doctor" at the Winter Garden Theatre, London. By this time she had eight years schooling behind her both in Paris and London and was completely bi-lingual. On this occasion, however, her fluency in English and French was not put to the test - she was engaged as a dancer. The choreographer was a young man called Frederick Ashton.

From that moment she had quite literally taken her first steps on the boards; she has continued to tread them ever since. She even managed the usual difficult transition from child actress to juvenile lead with less trouble than most, and when she was fifteen she was cast in the plum part of Sheila, a stage-struck schoolgirl in John van Druten's backstage drama, "Gertie Maude", which opened at the St. Martin's Theatre in August, 1937. The stalls were packed with celebrities such as John Gielgud, Noel Coward, Marie Tempest, Ivor Novello, Ruth Chatterton and many famous society people. The critics were there in strength too. All praised the play and made

particular mention of the young actress, Annabel Maule, whom they acclaimed as a "star".

Further important leads followed this early success. She was well-established by the time the war came but she abandoned her stage career almost immediately in order to join the W.R.N.S. in 1939. She enjoyed this service and was awarded a commission, and for the next six years her duties did not leave much time to fret about her theatre career being in cold storage. Her first play after the war was "As Good as a Feast" at the Gateway in June, 1946. This was followed by a tour of "Frieda" in which she played the title role. In 1947 she played Judy van Haan in "Dark Summer" at the St. Martin's. Thereafter she was in constant demand and was always in work. One of her biggest successes came in May, 1950, when she landed the female lead in "His Excellency" at the Prince's Theatre. "H.E." was played by Eric Portman and the play ran for well over a year with Donald Wolfitt taking over from Portman during the final months of the long run.

By this time her parents, Donovan and Mollie Maule, had established themselves securely at the Studio Theatre in Government Road and they invited Annabel to come out to Nairobi to star in John van Druten's "Bell, Book and Candle". It was Annabel's first visit to Kenya and it proved to be a memorable one, lasting just over three months.

Then back to London and more West End plays including Anouilh's "Restless Heart" starring Mai Zetterling at the St. James's Theatre. This was not the first Anouilh play Annabel had played in; the other was "Fading Mansions" starring Siohban McKenna at the Duchess Theatre.

Apart from the theatre Annabel has an impressive list of credits on radio and on the television screen. She was a member of the famous B.B.C. Repertory Company for two years starring in many of their productions, including playing Becky Sharp in a radio adaptation of "Vanity Fair".

In 1962 she returned to Kenya as the D.M.'s leading lady. For the next two-and-a-half years she played twenty-five leading roles, including Lady Teazle in "The School for Scandal", Portia in "The Merchant of Venice", Lulu in "Look after Lulu" and Maggie Hobson in "Hobson's Choice". During this period she also gained a great deal of experience of theatre conditions which stood her in good stead when she returned in 1968 to prepare to take over from her parents. She assumed control of the Donovan Maule Theatre on 1st January, 1971, and ran it with great success until the change to new management in July 1979. During her period as Artistic Director and later Managing Director of the Donovan Maule Theatre, Annabel played many roles and directed many productions as well as shouldering all other burdens of running a commercial theatre. One of these roles was that of Queen Mary in "Crown Matrimonial" which we are very happy to see her repeating in our production tonight.

Annabel Maule was awarded the MBE in the Birthday Honours in 1975.

ACKNOWLEDGEMENTS AND APPRECIATIONS

Leonard Moore Ltd. for loan of furniture & furnishings
Salons 680 & 681 for hairdressing
Greengates Kindergarten & Holiday School for rehearsal facilities
Theatre Arts '80 Ltd. for loan of Queen Mary's costumes
Esquire Ltd. for loan of Mr. Massie-Blomfield's morning suit
The Thrift Shop for assistance
Mrs. Janis Benson for generously standing in as Queen Mary to assist Miss Maule when directing
Mrs. Joan Shepherd for loan of Queen Mary's umbrella
H.E. Mr. J.R. Williams, British High Commissioner for assistance and loan of the Royal Crest
Mr. Gillis Turle of The Antique Gallery for loan of antique silver, glass and furnishings
The Standard for printing contemporary newspapers
Miss Sheherazad Moddie of Beauty Spot for assistance with make-up
Mrs. Poxon for assistance with make-up
Mr. Mohammed (the 'A' promoter Ltd.) for assistance with the programme
Our Advertisers for their support
Aisthorpe Timber Engineers for supply of joinery
Robbialac Paints for paint
B.A.T. Kenya Ltd. for cigarettes

The Nairobi City Players wish to acknowledge all those persons who willingly gave their assistance in many ways after this programme went to press. "The Players" are most grateful for their co-operation.

"Your obedient servant"

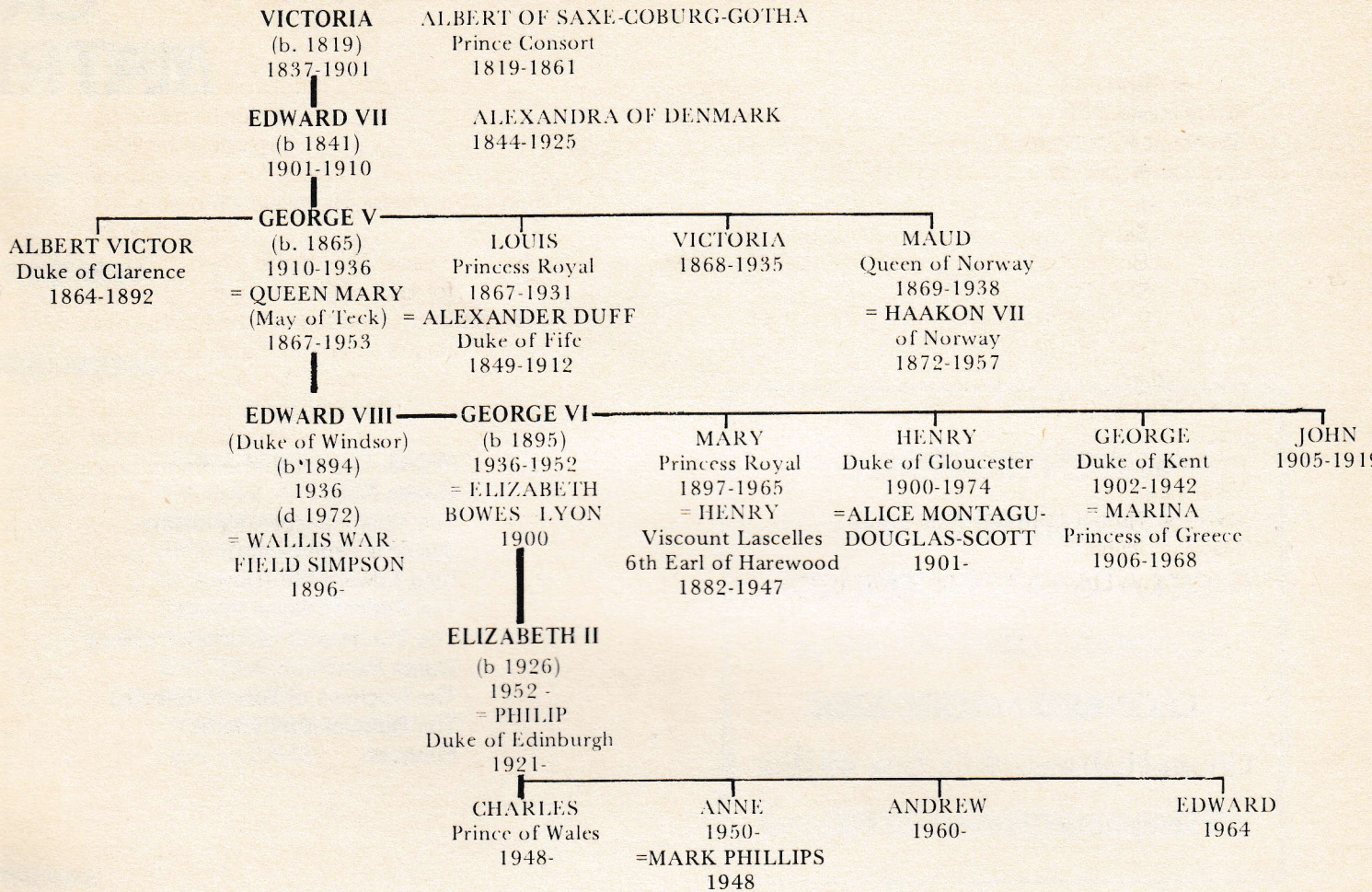
THOMAS WHITE BATTERIES LTD.

P.O. Box 42707, Kampala Rd., Nairobi,

Tel. 558651

***Manufacturers of Batteries
for Motor Cars, Lorries, Buses, Tractors, etc.***

THE ROYAL FAMILY TREE



In Power: Conservative Government, Prime Minister: Stanley Baldwin
 Leader of Opposition: Clement Attlee
 Foreign Secretary: Anthony Eden

CHARACTERS IN THE STORY

- MABELL, COUNTESS OF AIRLIE** _____ Lady in Waiting to the Queen.
- QUEEN MARY** _____ Aged 69, mother of Edward VIII and George VI.
- THE HON. MARGARET WYNDHAM** _____ Lady in Waiting to the Queen
- PAGE**
- KING EDWARD VIII (David)** _____ Aged 42, later Duke of Windsor
- PRINCESS ROYAL (Mary)** _____ Aged 39, sister of Edward VIII
- DUCHESS OF GLOUCESTER (Alice)** _____ Aged 34, sister-in-law of Edward VIII
- MR. MONCKTON, K.C.** _____ Aged about 40, legal adviser and friend of Edward VIII, later Sir Walter Monckton
- DUKE OF YORK (Bertie)** _____ Aged 41, younger brother and heir to Edward VIII, later George VI.
- DUCHESS OF YORK (Elizabeth)** _____ Aged 36, sister-in-law to Edward VIII
- FOOTMAN**

The action takes place in the late summer, autumn and winter of 1936, except for the last scene which takes place in the autumn of 1945.

The setting is Queen Mary's private sitting-room on the first floor of Marlborough House, London.

CROWN MATRIMONY

by ROYCE RITCHIE

DIRECTED BY ANNABELL

CAST IN ORDER OF APPEARANCE

THE ENTIRE PERIOD
FURNISHING OF THE
SET HAS BEEN PROVIDED

BY

LEONARD MOORE LTD.

Uhuru Highway. P.O. Box 45186,

Telephone: Nairobi 558021

Mabell, Countess of Airlie
Queen Mary
The Hon. Margaret Wyndham
Queen's Page (John)
King Edward VIII (David)
The Princess Royal (Mary)
The Duchess of Gloucester (Alice)
Walter Monckton, K.C.
The Duchess of York (Elizabeth)
The Duke of York (Bertie)
Footman

SYNOPSIS OF SCENES

ACT ONE

Scene One: September, 1936.
Scene Two: November, early 1936.
Scene Three: Later, the same year.

ACT TWO

Scene One: Early December 1936.
Scene Two: A few days later.
Scene Three: Later, the same year.
Scene Four: Autumn, 1945.

P. O. BOX 49608, NAIROBI.

Cables: "ADCOM" NAIROBI.

LENS LIND

OPHTHALMIC OPTICIAN

and

CONTACT - LENS CO.

CORNER HOUSE - KIMATHI STREET

CROWN TRIMONIAL

by ROYCE RYTON

ACTED BY ANNABEL MAULE

IN ORDER OF APPEARANCE

..... ANN PALMER
..... ANNABEL MAULE
..... STEPHANIE CURTIS
..... DAVID WILSON
..... DUNCAN BAKER
..... ELIZABETH PENNY
..... CHRISTINE DAVIS
..... WALTER HINDS
..... RITA BAKER
..... TONY MASSIE-BLOMFIELD
..... HUGH COWIE

SYNOPSIS OF SCENES

ACT ONE

One: September, 1936, late morning.
Two: November, early evening.
Three: Later, the same evening.

ACT TWO

One: Early December 1936, late morning.
Two: A few days later, late evening.
Three: Later, the same week, early evening.
Four: Autumn, 1945, afternoon.

THE PERIOD HAIRSTYLING
FOR ALL MEMBERS OF THE
CAST HAS BEEN CARRIED OUT
by the ARTISTIC TEAMS OF
SALON 680, 680 HOTEL
and
SALON 681, HOTEL PANAFRIC

LIMITED
OPALMIC OPTICIANS
and
LENS CONSULTANTS
— KIMATHI STREET — NAIROBI.

PHONE 23556 NAIROBI.

TELEX 22639 "ADCOM"

THE PRODUCTION TEAM

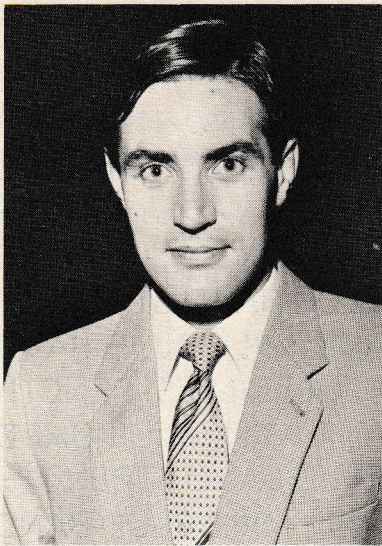
Stage Manager
Production Secretary
Assistant Stage Manager
Set Design
Construction Manager
Stage Crew and Set Construction

Lighting Design
Lighting Operation
Sound Recordings
Costume Designer
Costume Team
Dressers
Tailor
Front of House Managers
Properties
Assisted by

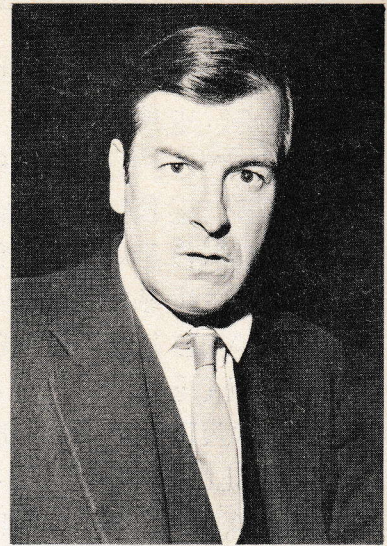
Publicity
Programme
Advertising
Programme Printer
Poster Design
Poster Screen
Photographs

Jeff Arnold
Paula Herr
Peter Davies
Benny Goodman
Ivor Maynard
Barbara Maynard, Carol Johnson,
Brenda and Glen Goodman,
Lorna Constantine, Declan English,
Ian Crawley, David Wilson,
Henry Aluda, Alison Stonewigg
Benny Goodman
Jason Mwai & Christopher Rutherford
Tony Bishop
Mary Epsom
Mary Epsom, Barbara Maynard and Shirley Bishop
Barbara Maynard and Joan Greene
Mr. P.D. Bhadresa
Joan and Peter Pearce
Vicky Udall
Marilyn Kuschel, Rosemary Robbins,
Margaret Aisthorpe, Hilary Mitchell,
Paula Herr, Marjorie Arnold & Christine Rutherford
Bryan Epsom
Marianne Herne
Joe Muriithi
the 'A' promoter ltd.
Winnie Ribiero of Taylor Adforce E.A. Ltd.
Vogue Screen Print
Mahindra Patel of Foto Unique

The Nairobi City Players also wish to thank all those who have assisted in any way after this programme went to press.



Duncan Baker as "King Edward VIII".



Tony Massie-Blomfield as "The Duke of York".



Rita Baker as "The Duchess of York".



Christine Davis as "The Duchess of Gloucester".



Elizabeth Penny as "The Princess Royal".

THE NAIROBI CITY PLAYERS

In September 1956 an "acting group" was formed to be known as the Nairobi City Players, and in its Constitution were set down the following aims and objects:-

- (a) Regularly to present theatrical productions of a good dramatic and artistic standard by utilising and co-ordinating the best available talent, producers, set designers and technical stage assistants.
- (b) Towards the fulfilment of (a) above, to be unstinting in the cost of production, subject to the limit set by the Standing Committee.
- (c) To take all necessary steps to encourage the drama and to improve the facilities available for theatrical productions.

The City Players have adhered rigidly to these aims from their formation and since that time have presented a total of 91 productions including 33 full-scale musicals, mostly at the Kenya National Theatre.

The Nairobi City Players under the esteemed patronage of the Hon. Charles Njonjo, EGH, MP, are controlled by a Standing Committee as follows:-

Bryan Epsom (Chairman)
 Brenda Goodman (Secretary)
 Ken Latham
 Rurik Ronsky
 Peter Pearce

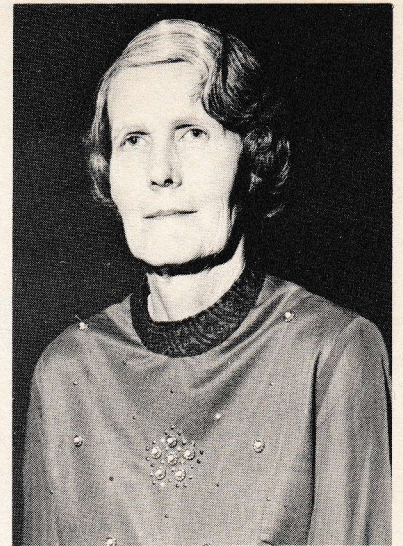
Gordon Purcell (Treasurer)
 Benny Goodman (Executive Member)
 Ivor Maynard
 Ken Turner
 Marianne Herne

Jeff Arnold
 Frank Edwards
 Joe Muriithi
 Carol Johnson

In addition to the Committee there is an Associate Membership limited to 75 members.



Walter Hinds as
"Mr. Walter Monckton, K.C."



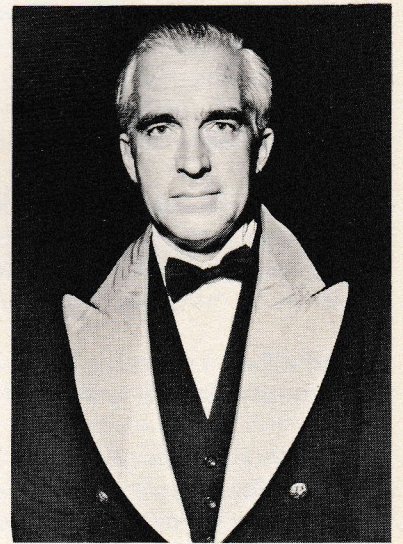
Ann Palmer as
"The Countess of Airlie".



Stephanie Curtis as
"The Hon. Margaret Wyndham".



David Wilson as
"John - The Queen's Page".



Hugh Cowie as "The Footman".

THE KENYA NATIONAL THEATRE

Manager	LEO PARDO
Box Office	HENRY ALUDAH
Master Carpenter	HUMPHREY NJOROGE
Electrician	JASON MWAI

NOTE:

Photography and recording are not permitted during the performance.
 Smoking in the Auditorium is prohibited. Refreshments and drinks may not be brought into the Auditorium.
 Orders for drinks during the Interval can be placed in advance at the Theatre Bar.

HISTORICAL BACKGROUND

On January 20th, 1936, King George V died at Sandringham. He was succeeded by perhaps the most popular Prince of Wales in history, who took the throne as King Edward VIII.

Six years earlier he met Mr. and Mrs. Ernest Simpson. In due course he formed a close attachment with Mrs. Wallis Simpson, a romance which was regarded as the love story of the twentieth century. In 1936 he was the King of England, but not yet crowned. She was an American, twice divorced. He was deeply in love with her; wanted to marry her — and retain his throne. Right until the last moment he believed that his enormous popularity with the British people would allow him to do so. He wished her by his side as Queen of England. But it was not to be.

Neither the Royal Family nor the British Government would accept such an imposition; after all, he was Head of the Church as well, and the lady was twice divorced. Inevitably the Establishment prevailed, very much so, and the “man born to be King”, Edward VIII, had to renounce his throne in a most moving Abdication Speech which is remembered to this day by many people throughout the world.

Edward VIII was 41 when he became King. His reign lasted 325 days. Although elaborate preparations were made for his Coronation, he was never crowned.

Shortly after his Abdication in 1937, Edward, now Duke of Windsor, married Mrs. Simpson in France, without any of the British Royal Family present. He was to spend most of the rest of his life in exile until his death in 1972. Probably he could have come home, after a discreet period, but his wife, the former Wallis Simpson, was refused royal status and he made his permanent return conditional on her receiving such recognition. She was never to receive it. He never forgave his family this slight to his wife.

In 1938, with war clouds gathering, the Duke made a broadcast for peace to America, but in Britain it was banned by the B.B.C. He also sent a telegram to Hitler appealing for peace. After the start of World War II he returned to England to offer his services and expected to be given an “appropriate job”. Once holding the rank of Field Marshall, however, he was assigned with the lower rank of Major-General to the British Military Mission in France. After Dunkirk, the Windsors were urged to leave France via Spain. Winston Churchill, the Prime Minister, wanted to send flying boats to Portugal to bring them home, but the Duke refused unless his wife became Her Royal Highness, which title had been denied her. At this time the German Government attempted to induce the Duke to aid them if England withdrew from the war, which Hitler believed quite likely. The bait was the British throne with Wallis by his side as Queen. An incredible plot! The Duke's loyalty was in no doubt and the scheming came to naught. He took up the appointment offered him as Governor of the Bahamas and with his wife by his side, served in that capacity until 1945.

His slavish love for the woman who had cost him his throne did not diminish, nor did his sense of grievance. “I played fair in 1936”, he said, “but I was bloody shabbily treated”.

PAST PRODUCTIONS

BY NAIROBI CITY PLAYERS

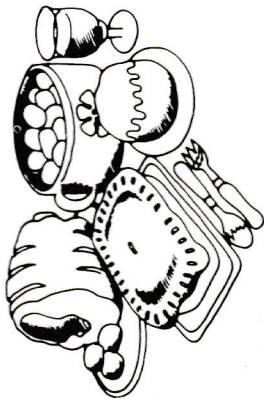
- 1956 "The Love of Four Colonels" by Peter Ustinov.
- 1957 "The Man Who Came to Dinner" by Moss Hart and George S. Kaufman.
"Ring Round The Moon" by Jean Anouilh.
"Payment Deferred" by Jeffrey Dell.
- 1958 "Romanoff and Juliet" by Peter Ustinov.
"Two Gentlemen of Soho" by A.P. Herbert. (Winning Entry Kenya Drama Festival, 1958)
"Carrington V.C." by Dorothy and Campbell Christie.
"Will Any Gentleman" by Vernon Sylvaine.
- 1959 "Rope" by Patrick Hamilton.
"You Can't Take It With You" by Moss Hart and George S. Kaufman.
"The Paragon" by Roland and Michael Pertwee.
- 1960 "The Diary of Anne Frank" by Frances Goodrich and Albert Hackett.
"Six Characters In Search of An Author" by Pirandello.
"A Farrago" Comprising
 "The Proposal" by Chekhov.
 "Uneasy Lies the Head..." from Shakespeare.
 "Red Peppers" by Noel Coward.
- 1961 "The King and I" by Rodgers and Hammerstein.
"The Caine Mutiny Court Martial" by Herman Wouk.
"The House by the Lake" by Hugh Mills.
"The Bespoke Overcoat" by Wolf Mankowitz. (Winning Entry Kenya Drama Festival, 1961)
"The Hole" by N.F. Simpson. (Drama Festival Entry, 1961)
- 1962 "Caesar and Cleopatra" by George Bernard Shaw.
"The Long and the Short and the Tall" by Willis Hall.
"Men Without Shadows" by Jean Paul Sartre. (Placed Third Winning Entry Kenya Drama Festival, 1962)
"No. Fixed Abode" by Clive Exton. (Drama Festival Entry, 1962)
- 1963 "See How They Run" by Philip King.
"Annie Get Your Gun" by Irving Berlin, Herbert and Dorothy Fields.
"Irma La Douce" by Marguerite Monnot and Alexandre Breffort.
Excerpts from "St. Joan" by George Bernard Shaw. (Placed Second Winning Entry Kenya Drama Festival, 1963)
"The Resounding Tinkle" by N.F. Simpson. (Drama Festival Entry, 1963)
- 1964 "South Pacific" by Rodgers and Hammerstein.
"Ross" by Terence Rattigan.
"The Valiant" by Holworthy Hall and Robert Middlemass. (Winning Entry Kenya Drama Festival, 1964)
"The Scar" by Rebecca Njau. (Placed Third Winning Entry Kenya Drama Festival, 1964 and also Best Original Play)
"Oklahoma!" by Rodgers and Hammerstein.
- 1965 "The Country Wife" by William Wycherley.
"The Duchess of Malfi" by John Webster. (Placed Joint Third Winning Entry Kenya Drama Festival, 1965)
"The Wizard of Oz" by Frank Baum, Harold Arlen and E.Y. Harburg.
- 1966 "A View From The Bridge" by Arthur Miller.
"The Man Who Came to Dinner" (revival) by Moss Hart and George S. Kaufman.
- 1967 "Twelve Angry Men" by Reginald Rose.
A Double Bill of—
 "Lunch Hour" by John Mortimer.
 "One Way Pendulum" by N.F. Simpson.
"The Sound of Music" by Rodgers and Hammerstein.
- 1968 "A Streetcar Named Desire" by Tennessee Williams.
"Guys and Dolls" by Frank Loesser, Jo Swerling and Abe Burrows.
"My Fair Lady" by Alan Jay Lerner and Frederick Loewe.

Past Productions continued

- 1969 "The Affair" by Ronald Millar.
"How to Succeed in Business Without Really Trying" by Frank Loesser and Abe Burrows.
"After the Fall" by Arthur Miller.
"Kiss Me Kate" by Cole Porter and Bella & Sam Spewack.
- 1970 "The Magistrate" by Sir Arthur Wing Pinero.
A Double Bill of—
 "The Dock Brief" by John Mortimer.
 "The Real Inspector Hound" by Tom Stoppard.
"The Lion and the Jewel" by Wole Soyinka.
 (In association with the National Theatre Company of Kenya)
"The Pyjama Game" by Richard Adler, Jerry Ross, George Abbot and Richard Bissell.
- 1971 "Hadrian VII" by Peter Luke.
"Fiddler on the Roof" by Joseph Stein, Jerry Boch and Sheldon Harnick.
"Kismet" by Robert Wright, George Forrest, Charles Lederer and Luther Davies.
- 1972 "Under Milk Wood" by Dylan Thomas.
"Salad Days" by Julian Slade and Dorothy Reynolds.
"Saint Joan" by George Bernard Shaw.
"Hello, Dolly!" by Michael Stewart and Jerry Herman.
- 1973 "Conduct Unbecoming" by Barry England.
"Man of La Mancha" by Dale Wasserman, Mitch Leigh and Joe Darion.
"A Voyage Round My Father" by John Mortimer.
- 1974 "Minstrels 1974" by Benny Goodman.
"Everything in the Garden" by Giles Cooper.
"Godspell" by John Michael Tebelak and Stephen Schwartz.
"The Rainmaker" by N. Richard Nash.
"Oliver" by Lionel Bart.
- 1975 "Minstrels 1975" by Benny Goodman.
"The Masters" by Ronald Millar (based on book by C.P. Snow).
"Genesis" by David Kelsey, Kendal Davies and Charles Bound.
"An Inspector Calls" by J.B. Priestley.
"Another Opening" by Benny Goodman.
- 1976 "Hostile Witness" by Jack Roffey.
"Cabaret" by Fred Ebb and John Kander.
"A Funny Thing Happened on the way to the Forum" by Stephen Sondheim, Larry Gelbart,
and Burth Shevelove.
- 1977 A "Trio" Season of productions including—
 "The Man in the Glass Booth" by Robert Shaw.
 "The Fantasticks" by Tom Jones and Harvey Schmidt.
 "The Desperate Hours" by Joseph Hayes.
"The Merry Widow" by Franz Lehar.
- 1978 "Ministrels 1978" by Benny Goodman.
"The Barber of Seville" by G. Rossini.
"Oklahoma!" by Rodgers and Hammerstein.
- 1979 "The Pirates of Penzance" by Gilbert and Sullivan
"Guys and Dolls" by Frank Loesser
- 1980 "Side by Side by Sondheim" by Stephen Sondheim
"H.M.S. Pinafore" by Gilbert and Sullivan.

Five Great Lunches at the Norfolk

**Old English
Luncheons**
Every Tuesday



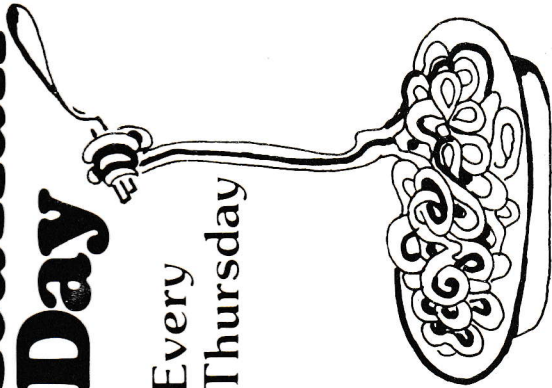
**KENYAN
DISHES**

Every
Wednesday

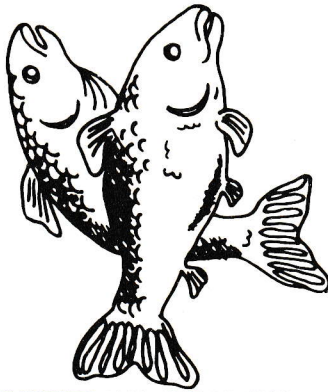


**Italian
Day**

Every
Thursday



**fish
buffet**
Every Friday



**Curry
Lunches**
Every Sunday



We will be pleased to give you a discount of 10% on the luncheon price if you present this card to the Restaurant Manager before 31st December 1980.
Just telephone 335422 for reservations.

Please tear this page out of the programme and hand it to the Eland Room Restaurant Manager to obtain your discount.

Introducing a rather better way
to go about your business.



Club

In the tradition
of the British Club,
British Airways

presents 'Club' service
from October 28th, on
our daily 747s to London.

British Airways Club is
reserved exclusively for those
who have paid the full economy
fare, and offers a number of
rather distinctive privileges.

At Jomo Kenyatta International
airport you'll find a separate
check-in desk for Club passengers.

On board, you'll travel in a
separate 'Club' cabin, and enjoy free
in-flight entertainment, a wide selection
of complimentary drinks, a choice of main
courses for lunch and dinner, free slipperettes
and more individual attention.

You'll also be able to leave the plane
sooner than most passengers.

For details of this superior service,
contact your Travel Agent or
British Airways.

**British
airways**

We'll take more care of you.

